

Parts Manual
45-8443EN
PL30-1212-1A
02/16/2012

DOTCO[®]

12S12 Series
2" Blade Capacity Saw



For additional product information visit our website at <http://www.apextoolgroup.com>

Dotco®
Nomenclature

	12	S	1	2	XX	-	02	OH
<u>Tool Series</u> 14 = Ergo Handle								
<u>Throttle Type</u> S = Locking Lever								
<u>Motor Size</u> 1 = 0.3 hp								
<u>Handle Style</u> 2 = Right Angle								
<u>Speed Options (RPM)</u> Front Exhaust (Non-Vacuum) 87 = 1,500 88 = 2,400 89 = 3,600								
<u>Termination Code</u> 02 = Saw, 2" Blade, 1/4" Arbor								
<u>Overhose Option (extra cost)</u> OH = Overhose (rear exhaust models only)								

Description and Instructions

Language Version:

This Parts Manual is the ***“Original Instructions”*** intended for all persons who will use or repair these tools.

Product Identification:

Refer to the “Model Nomenclature” page in this document.

Noise and Vibration:

Refer to documents CE-1008DC and CE-1008TD.

General Description:

Air powered 2” blade capacity light duty saw.

Intended Use:

These air powered saws are intended for light duty cutting applications Use only for their designated purpose. Do not use as a hammer, lever or other improper usage that can cause tool damage and operator injury.

Copyright protection:

Apex Tool Group, LLC reserves the right to modify, supplement or improve this document or the product without prior notice. This document may not be reproduced in any way, shape or form, in full or parts thereof, or copied to another natural or machine readable language or to a data carrier, whether electronic, mechanical, optical or otherwise without the express permission of Apex Tool Group, LLC.

General Safety:

Refer to General Safety document, CE-2008 for general safety operating instructions for this equipment.

Lubrication:

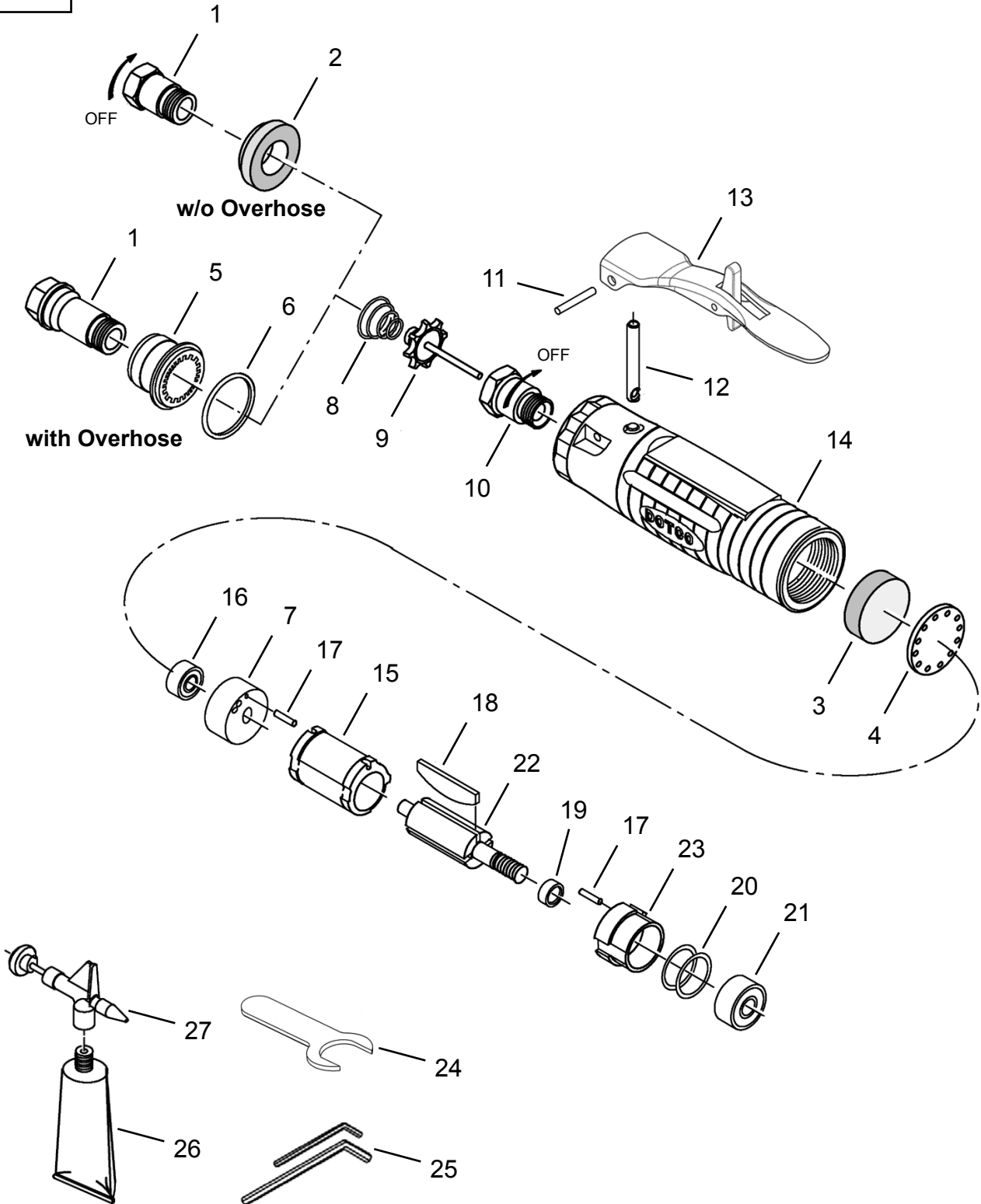
Refer to lubrication document, PL65-LUB, for general lubrication instructions.

Gearing: When the gearing is cleaned or replaced, apply a thin coat of lubricant. Only a small amount is necessary. A 2 ounce tube (45-0980) is available from Apex Tool Group.

CAUTION: Do not use substitutes for oil and grease. This could result in damage to the tool.

Dotco®
Rear Exhaust Saw

“A”



Dotco®
Rear Exhaust Saw

45-8443EN
02/16/2012

Illustration "A"

Ref	Number	#	X	EN	
				Description	
1	Table "A"	1	1	Inlet Adapter	
2	01-2520	1	1	Diffuser	
3	01-1046	1	3	Filter Disc	
4	01-1016	1		Filter Retainer	
5	01-1032	1	1	Muffler	
6	3036PT	1	3	O-Ring	
7	1203PT	1		Rear End Plate (includes 1 Ref. 17)	
8	01-2519	1	3	Valve Spring	
9	01-2518	1	1	Valve	
10	01-2504	1		Valve Seat	
11	1042	1	1	Lever Pin	
12	01-1017	1	1	Lever Push Rod	
13	01-1267	1	1	Lock-Off Lever Assembly	
14	01-1533	1		Motor Housing	
15	1002PT	1		Cylinder	
16	504PT	1	2	Ball Bearing	
17	1041	2	2	Pin	
18	1006PT	4	12	Rotor Blade	
19	1017PT	1		Rotor Spacer	
20	1355PT	1		Shim Packet	
21	538PT	1	2	Ball Bearing	
22	Table "A"	1		Rotor (includes Ref. 19)	
23	1176	1		Front End Plate (includes 1 Ref. 17)	
24	14-0807	1		Wrench (7/16")	
25	14-0184PT	1		Hex Key (1/8")	
	14-0186PT	1		Hex Key (3/16")	
26	45-0980	1		Gear Lube (2 oz.)	
27	45-1982	1		Grease Gun	

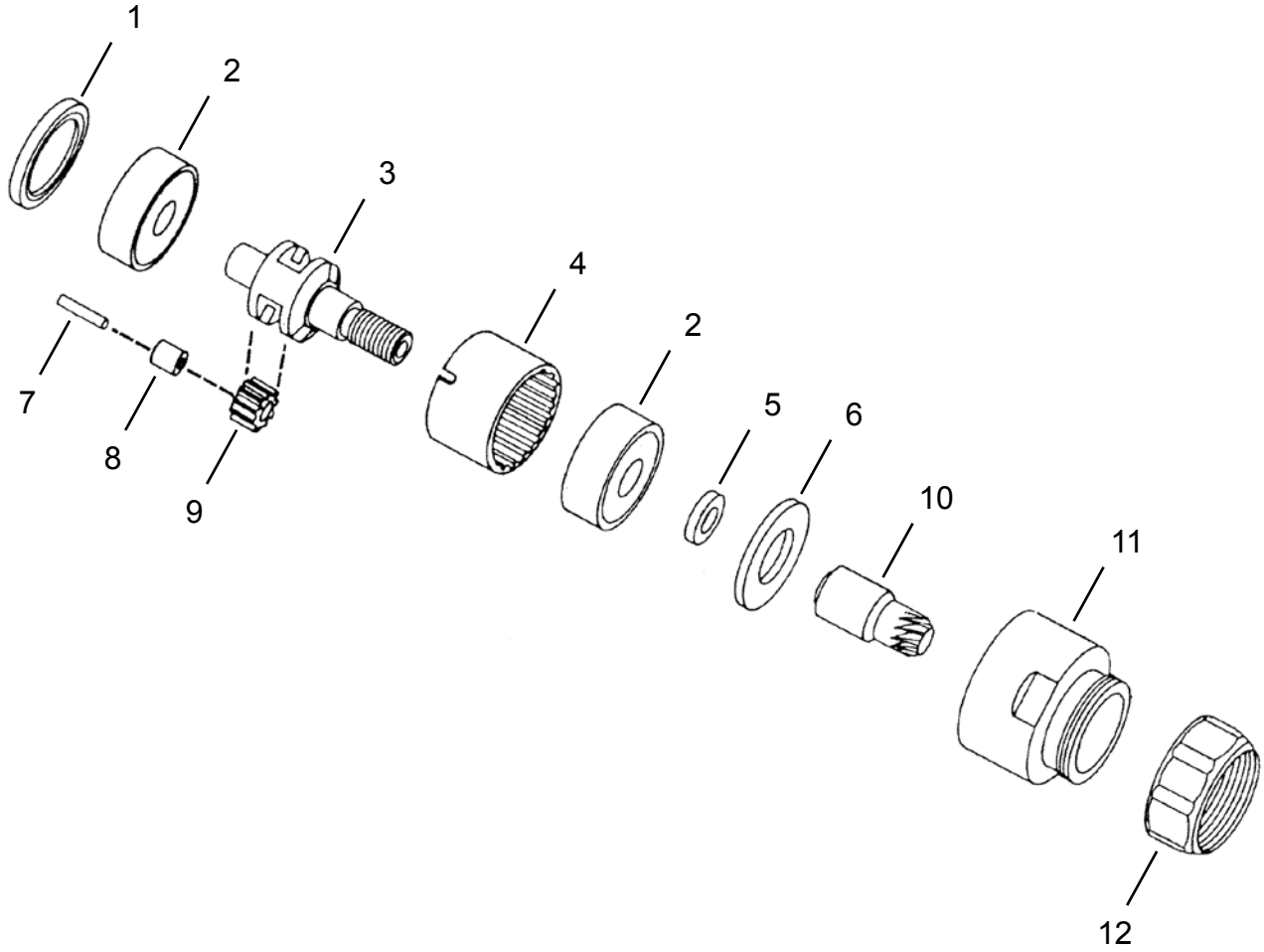
(#) Quantity

(X) Recommended Spare Parts

Table "A"

Ref.	Description	#	12S1287 12S1288	#	12S1289
1	Inlet Adapter (w/o Overhose)	1	01-2505	1	01-2505
	Inlet Adapter (w/ Overhose)	1	01-1031	1	01-1031
22	Rotor	1	2912PT	1	1959

“B”



Dotco®
Gear Assembly

45-8443EN
02/16/2012

Illustration "B"

Ref	Number	#	X	EN	
				Description	
1	1563PT	1		Spacer	
2	519	2	4	Ball Bearing	
3	02-1111	1		Planet Gear Cage	
4	1529PT	1		Ring Gear	
5	1528PT	1		Spacer	
6	1527PT	1		Spacer	
7	1526PT	2	4	Planet Gear Pin	
8	1464	2	4	Needle Bearing	
9	Table "B"	2	4	Planet Gear	
10	Table "B"	1	2	Pinion Gear	
11	1524	1		Adapter	
12	1032PT	1		Cap	

(#) Quantity

(X) Recommended Spare Parts

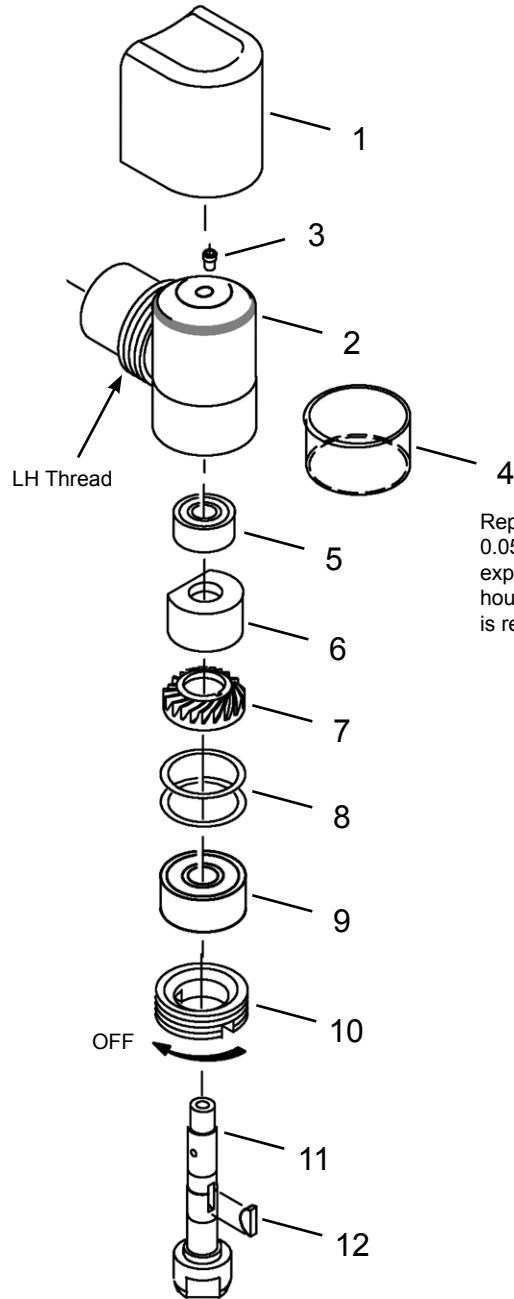
Table "B"

Ref.	Description	#	12S1287	#	12S1288	#	12S1289
9	Planet Gear	2	1536 (18T)	2	1536 (18T)	2	1540PT (16T)
10	Pinion Gear	1	1066PT	1	1187	1	1187

(T) Teeth

Dotco® Angle Housing Assembly

“C”



Replacement Wear Rings are 0.050" undersize and must be expanded to slip onto the angle housing. Service tool 45-1020 is required.

Dotco®
Angle Housing Assembly

45-8443EN
02/16/2012

Illustration "C"

Ref	Number	#	X	EN
				Description
1	01-1048	1		Angle Head Cover
2	1024PT	1		Angle Housing (includes Ref. 3-4)
3	1463PT	1	1	Grease Fitting
4	1356PT	1	1	Wear Ring
5	504PT	1	2	Ball Bearing
6	1755PT	1	2	Lube Disc
7	Table "C"	1	1	Bevel Gear
8	1355PT	1		Shim Packet
9	538PT	1	2	Ball Bearing
10	1025PT	1		Lock Ring
11	1069	1		Spindle
12	1062PT	2	4	Woodruff Key

(#) Quantity

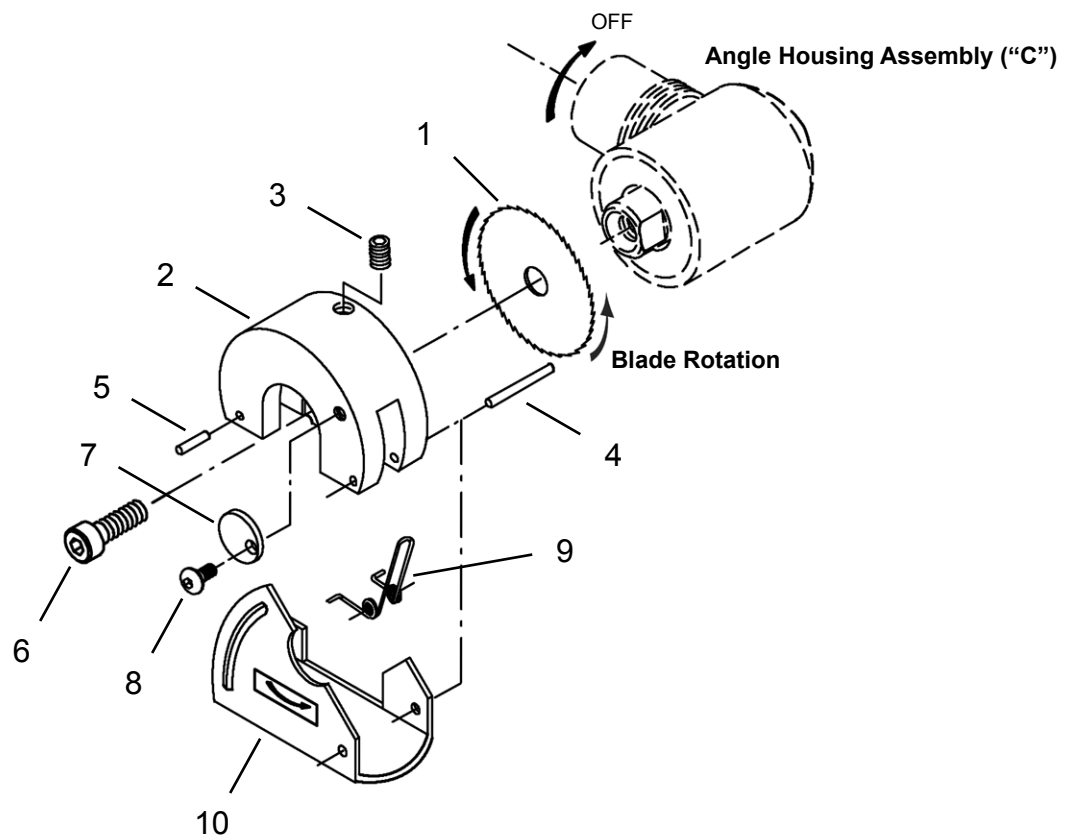
(X) Recommended Spare Parts

Table "C"

Ref.	Description	#	12S1287	#	12S1288 12S1289
7	Bevel Gear	1	1067	1	1188PT

Dotco®
14-1866 Saw Attachment

“D”



Dotco®
14-1866 Saw Attachment

45-8443EN
02/16/2012

Illustration "D"

Ref	Number	#	X	EN
				Description
--	14-1866	1		Complete Saw Attachment
1	(1)	1		Saw Blade
2	14-1868	1		Saw Housing
3	1403PT	1	2	Set Screw
4	1856PT	1	1	Pin
5	3062	1	1	Pin
6	14-1867	1		Spindle Bolt
7	1797PT	1		Depth Adjustment Cam
8	1798PT	1		Depth Adjustment Screw
9	1796	1	3	Spring
10	14-1869	1		Saw Guard

(#) Quantity

(X) Recommended Spare Parts

(1) 1/4" Arbor - 2" Diameter maximum: refer to Product Catalog

Sales & Service Centers

Note: All locations may not service all products. Please contact the nearest Sales & Service Center for the appropriate facility to handle your service requirements.

Dallas, TX
**Apex Tool Group
Sales & Service Center**
1470 Post & Paddock
Grand Prairie, TX 75050
Tel: 972-641-9563
Fax: 972-641-9674

Detroit, MI
**Apex Tool Group
Sales & Service Center**
2630 Superior Court
Auburn Hills, MI 48326
Tel: 248-391-3700
Fax: 248-391-7824

Houston, TX
**Apex Tool Group
Sales & Service Center**
6550 West Sam Houston
Parkway North, Suite 200
Houston, TX 77041
Tel: 713-849-2364
Fax: 713-849-2047

Lexington, SC
Apex Tool Group
670 Industrial Drive
Lexington, SC 29072
Tel: 800-845-5629
Tel: 803-951-7544
Fax: 803-358-7681

Los Angeles, CA
**Apex Tool Group
Sales & Service Center**
15503 Blackburn Avenue
Norwalk, CA 90650
Tel: 562-623-4457
Fax: 562-802-1718

Seattle, WA
**Apex Tool Group
Sales & Service Center**
2865 152nd Avenue N.E.
Redmond, WA 98052
Tel: 425-497-0476
Fax: 425-497-0496

York, PA
**Apex Tool Group
Sales & Service Center**
3990 East Market Street
York, PA 17402
Tel: 717-755-2933
Fax: 717-757-5063

Canada
**Apex Tool Group
Sales & Service Center**
5925 McLaughlin Road
Mississauga, Ont. L5R 1B8
Canada
Tel: 905-501-4785
Fax: 905-501-4786

Germany
**Apex Tool Group
GmbH & Co. OHG**
Industriestraße 1
73463 Westhausen
Germany
Tel: +49 (0) 73 63 81 0
Fax: +49 (0) 73 63 81 222

England
**Apex Tool Group
GmbH & Co. OHG**
C/O Spline Gauges
Piccadilly, Tamworth
Staffordshire B78 2ER
United Kingdom
Tel: +44 1827 8741 28
Fax: +44 1827 8741 28

France
Apex Tool Group SAS
25 rue Maurice Chevalier
77330 Ozoir-La-Ferrière
France
Tel: +33 1 6443 2200
Fax: +33 1 6443 1717

China
Cooper (China) Co., Ltd.
a company of
Apex Tool Group, LLC
955 Sheng Li Road,
Heqing Pudong, Shanghai
China 201201
Tel: +86-21-28994176
Fax: +86-21-51118446

Mexico
Cooper Tools
de México S.A. de C.V.
a company of
Apex Tool Group, LLC
Vialidad El Pueblito #103
Parque Industrial Querétaro
Querétaro, QRO 76220
Mexico
Tel: +52 (442) 211-3800
Fax: +52 (442) 103-0443

Brazil
Cooper Tools Industrial Ltda.
a company of
Apex Tool Group, LLC
Av. Liberdade, 4055
Zona Industrial - Iporanga
18087-170 Sorocaba
SP Brazil
Tel: +55 15 2383929
Fax: +55 15 2383260

Hungary
Cooper Tools Hungaria Kft.
a company of
Apex Tool Group, LLC
Berkenyefa sor 7
Pf: 640
9027 Győr
Hungary
Tel: +36 96 66 1383
Fax: +36 96 66 1135

Apex Tool Group, LLC
1000 Lufkin Road
Apex, NC 27539
Phone: 919-387-0099
Fax: 919-387-2614
www.apextoolgroup.com

DOTCO®