

**12L2062 Series**  
Inline Material Removal Tools



**12L2062-96**  
Nibbler



**12L2062-98**  
Scissors



**12L2062-99**  
Shear

	<b>12</b>	<b>L</b>	<b>2</b>	<b>0</b>	<b>62</b>	<b>-</b>	<b>XX</b>
<u>Product Classification</u> <b>12</b> = Ergonomic Grinder/Sander							
<u>Throttle Type</u> <b>L</b> = Locking Lever							
<u>Motor Size</u> <b>2</b> = 0.6 hp							
<u>Handle Style</u> <b>0</b> = Straight							
<u>Speed Options (RPM)</u> <b>Rear Exhaust</b> <b>62</b> = 3,500							
<u>Termination Code</u> <b>96</b> = Nibbler Head <b>98</b> = Scissor Shear Head <b>99</b> = Shear Head							

The original language of this manual is English.

**Product Safety Information:**

Intended Use:

These pneumatic material removal tools are to be used for cutting material with the cutting devices provided.

For additional product safety information refer to Apex Tool Group, LLC or Apex Tool Group GmbH document GS-2013, General Safety Instructions Material Removal Tools.

**! WARNING**

These tools must not be modified in any manner unless approved in writing by Apex Tool Group, LLC or Apex Tool Group GmbH. All safety devices must be properly installed and maintained in good working order.

**EC Declaration of Conformity:**

We affirm that this machine is in accordance with the following EC regulations (2006/42/EC). Applied harmonized standards are ISO 12100:2010.

**Noise and Vibration:**

Noise: ≤ 83 dB(A)

Vibration: < 2.5 m/s<sup>2</sup>

**Air Line Lubrication and Gear Grease:**

Air Line Lubrication: Use Apex Tool Group, LLC or Apex Tool Group GmbH's lightweight air tool oil 500021 (available in quantities shown in the following chart) or an SAE-5 lightweight spindle oil.

Part No.	Packaged	Designation
540397	1 Quart (0.94 liter)	Airlube 10W/NR-420LB DR
533485	1 US Gallon (3.78 liter)	Airlube 10W/NR-420LB DR
45-0983	2.8 oz. (79.4g) Tube	EP-2 Gear Grease

**Air Supply Line:**

Parameter	Description
Air Hose	Minimum inside diameter: 5/16" (7.9mm) Maximum length: 8.0' (2.4 m)
Working pressure range	Performance rated at: 90 psi (620 kPa)
Compressed air	Air quality according to ISO 8573-1, quality class 2.4.3 The compressed air must be clean and dry.

**Service and Repair:**

Tool service and repair should be performed by an authorized Apex Tool Group, LLC or Apex Tool Group GmbH Center. Refer to the last page of this manual for locations.

**Disposal:**



Observe local disposal guidelines for all components of this tool and its packaging.

**Copyright Protection:**

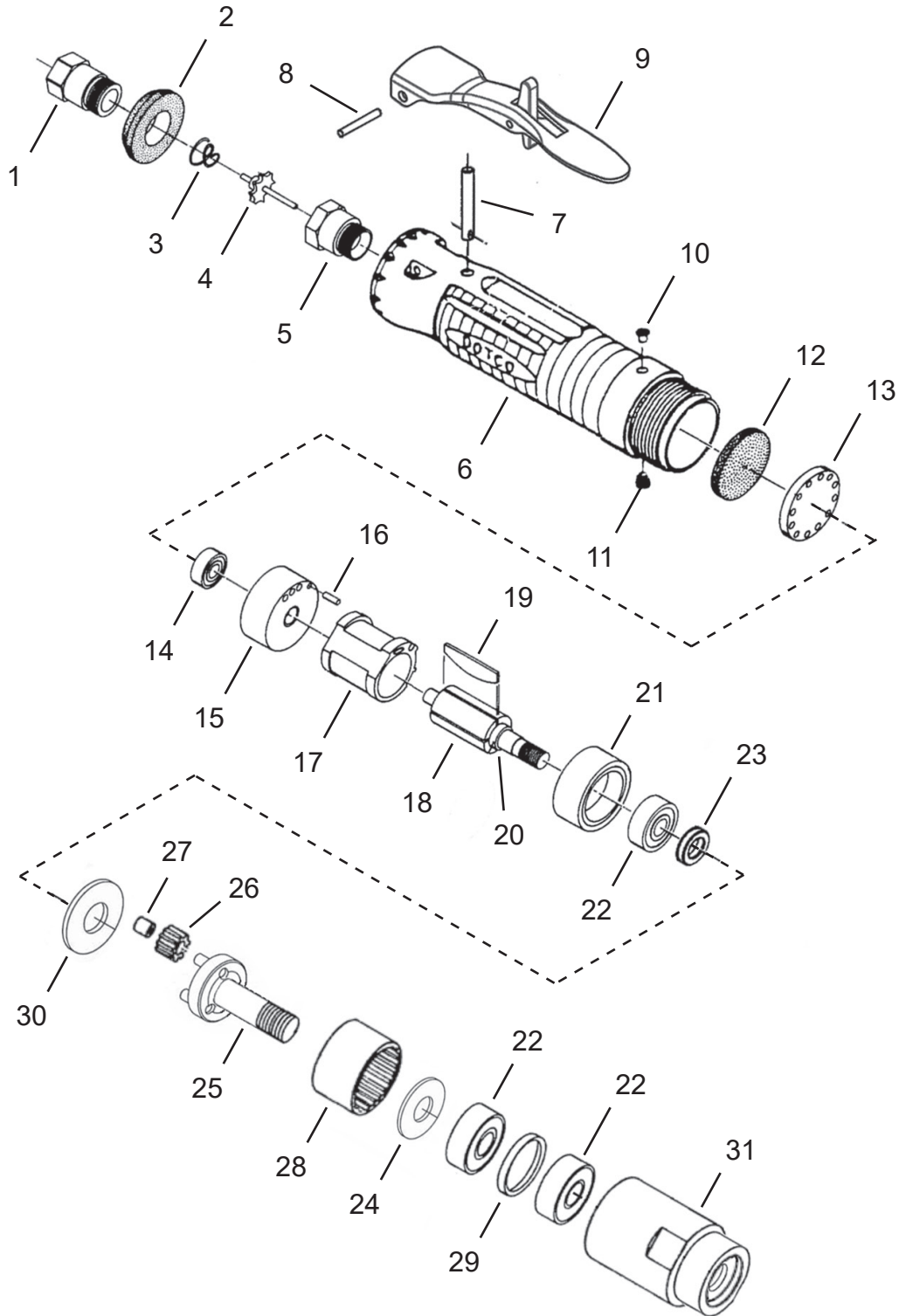
Apex Tool Group, LLC or Apex Tool Group GmbH reserves the right to modify, supplement or improve this document or the product without prior notice. This document may not be reproduced in any way, shape or form, in full or parts thereof, or copied to another natural or machine readable language or to a data carrier, whether electronic, mechanical, optical or otherwise without the express permission of Apex Tool Group, LLC or Apex Tool Group GmbH.

**Dotco®**  
12L2062 Power Unit



EN

“A”



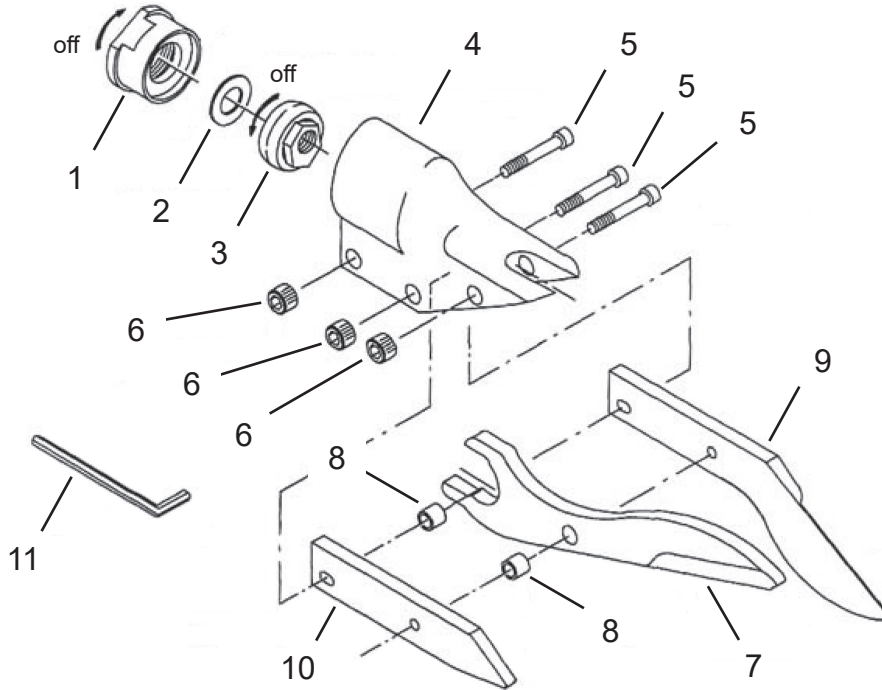
**Illustration "A"**

Ref	Number	#	X	EN
				Description
1	01-2505	1	1	Inlet Adapter
2	01-2520	1	1	Diffuser
3	01-2519	1	3	Valve Spring
4	01-2518	1	1	Valve
5	01-2504	1		Valve Seat
6	01-2018PT	1		Motor Housing
7	01-2517	1	1	Lever Push Rod
8	1042	1	1	Lever Pin
9	01-1267	1	1	Lock-Off Lever Assembly
10	1463PT	1	1	Grease Fitting
11	2831	1	2	Set Screw
12	4293	1	3	Filter Disc
13	01-2016PT	1		Filter Retainer
14	538PT	1	2	Ball Bearing
15	7003PT	1		Rear End Plate (includes Ref. 16)
16	1041	1	2	Rear End Plate Pin
17	2002PT	1		Cylinder
18	7015	1		Rotor
19	2006PT	4	12	Rotor Blade
20	2017PT	1		Rotor Spacer
21	2508	1		Front End Plate
22	500PT	3	6	Ball Bearing
23	7108	1		Spacer
24	02-7620	1		Spacer
25	7716	1		Output Planetary Carrier
26	7625	2	4	Planetary Gear (includes Ref. 27)
27	1464	2	4	Planetary Gear Needle Bearing
28	7621PT	1		Ring Gear
29	7619PT	1		Spacer
30	7788PT	1		Wear Washer
31	7715	1		Planetary Gear Housing

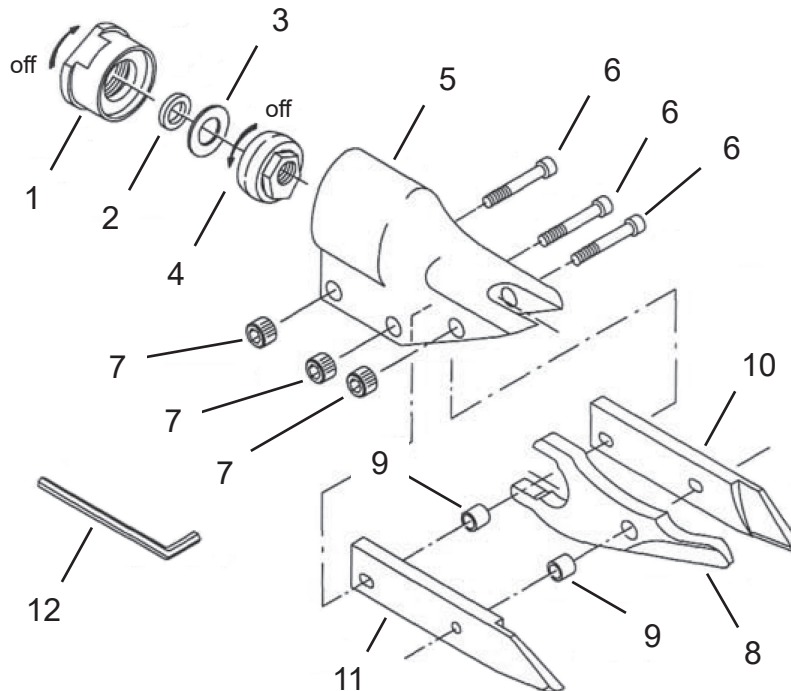
(#) Quantity

(X) Recommended Spare Parts (quantity shown based on 1-5 tools in operation)

**“B”** 14-1650 Scissor Shear Head



**“C”** 14-1550 Shear Head



**Illustration "B"**

Ref	Number	#	X	EN
				Description
1	1018226	1		Adapter
2	1546PT	1		Spacer
3	14-1551	1	2	Eccentric Bearing Assembly
4	14-1552	1		Housing
5	1036PT	3		Cap Screw
6	14-1557	3		Knurled Insert
7	14-1651	1		Center Scissor Blade
8	14-1556	2	4	Spacer Bushing
9	14-1652	1		Side Knife
10	14-1649	1		Side Spacer
11	14-0185	1		Hex Key (5/32")

(#) Quantity

(X) Recommended Spare Parts (quantity shown based on 1-5 tools in operation)

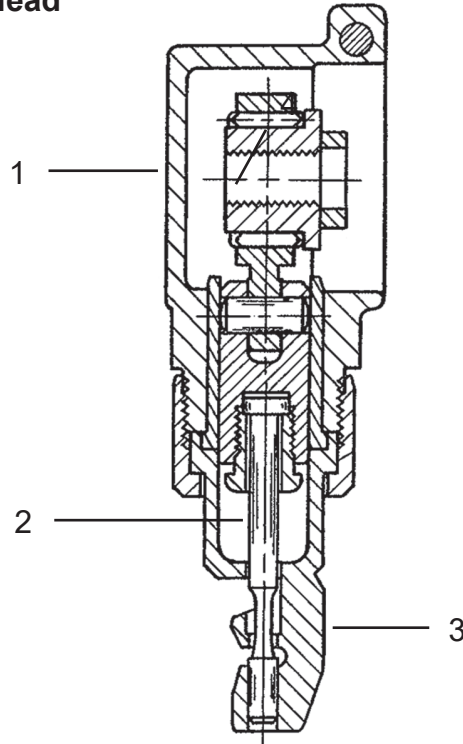
**Illustration "C"**

Ref	Number	#	X	EN
				Description
1	1018226	1		Adapter
2	1547PT	1		Spacer
3	1546PT	1		Spacer
4	14-1551	1	2	Eccentric Bearing Assembly
5	14-1552	1		Housing
6	1036PT	3		Cap Screw
7	14-1557	3		Knurled Insert
8	14-1555	1		Center Blade
9	14-1556	2	4	Spacer Bushing
10	14-1553	1		Left Side Knife
11	14-1554	1		Right Side Knife
12	14-0185	1		Hex Key (5/32")

(#) Quantity

(X) Recommended Spare Parts (quantity shown based on 1-5 tools in operation)

**“D”** 14-1750 Nibbler Head





**Illustration "D"**

Ref	Number	#	X	EN
				Description
1	14-1750	1		Nibbler Assembly Complete (includes Ref. 2-3)
2	14-1752	1	1	Punch
3	14-1751	1	1	Die

(#) Quantity

(X) Recommended Spare Parts (quantity shown based on 1-5 tools in operation)

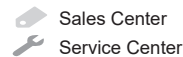




# POWER TOOLS SALES & SERVICE CENTERS

Please note that all locations may not service all products.

Contact the nearest Cleco® Sales & Service Center for the appropriate facility to handle your service requirements.



## NORTH AMERICA | SOUTH AMERICA

### Detroit, Michigan

Apex Tool Group  
2630 Superior Court  
Auburn Hills, MI 48236  
Phone: +1 (248) 393-5644  
Fax: +1 (248) 391-6295

### Lexington, South Carolina

Apex Tool Group  
670 Industrial Drive  
Lexington, SC 29072  
Phone: +1 (800) 845-5629  
Phone: +1 (919) 387-0099  
Fax: +1 (803) 358-7681

### Mexico

Apex Tool Group  
Vialidad El Pueblito #103  
Parque Industrial Querétaro  
Querétaro, QRO 76220  
Mexico  
Phone: +52 (442) 211 3800  
Fax: +52 (800) 685 5560

### Brazil

Apex Tool Group  
Av. Liberdade, 4055  
Zona Industrial Iporanga  
Sorocaba, São Paulo  
CEP# 18087-170  
Brazil  
Phone: +55 15 3238 3870  
Fax: +55 15 3238 3938

## EUROPE | MIDDLE EAST | AFRICA

### England

Apex Tool Group GmbH  
C/O Spline Gauges  
Piccadilly, Tamworth  
Staffordshire B78 2ER  
United Kingdom  
Phone: +44 1827 8727 71  
Fax: +44 1827 8741 28

### France

Apex Tool Group SAS  
25 Avenue Maurice  
Chevalier - ZI  
77330 Ozoir-La-Ferrière  
France  
Phone: +33 1 64 43 22 00  
Fax: +33 1 64 43 17 17

### Germany

Apex Tool Group GmbH  
Industriestraße 1  
73463 Westhausen  
Germany  
Phone: +49 (0) 73 63 81 0  
Fax: +49 (0) 73 63 81 222

### Hungary

Apex Tool Group  
Hungária Kft.  
Platánfa u. 2  
9027 Győr  
Hungary  
Phone: +36 96 66 1383  
Fax: +36 96 66 1135

## ASIA PACIFIC

### Australia

Apex Tool Group  
519 Nurigong Street, Albury  
NSW 2640  
Australia  
Phone: +61 2 6058 0300

### China

Apex Power Tool Trading  
(Shanghai) Co., Ltd.  
2nd Floor, Area C  
177 Bi Bo Road  
Pu Dong New Area,  
Shanghai  
China 201203 P.R.C.  
Phone: +86 21 60880320  
Fax: +86 21 60880298

### India

Apex Power Tool India  
Private Limited  
Gala No. 1, Plot No. 5  
S. No. 234, 235 & 245  
Indialand Global  
Industrial Park  
Taluka-Mulsi, Phase I  
Hinjawadi, Pune 411057  
Maharashtra, India  
Phone: +91 020 66761111

### Japan

Apex Tool Group Japan  
Korin-Kaikan 5F,  
3-6-23 Shibakoen,  
Minato-Ku,  
Tokyo 105-0011, JAPAN  
Phone: +81-3-6450-1840  
Fax: +81-3-6450-1841

### Korea

Apex Tool Group Korea  
#1503, Hibrand Living Bldg.,  
215 Yangjae-dong,  
Seocho-gu, Seoul 137-924,  
Korea  
Phone: +82-2-2155-0250  
Fax: +82-2-2155-0252



### Apex Tool Group, LLC

Phone: +1 (800) 845-5629  
Phone: +1 (919) 387-0099  
Fax: +1 (803) 358-7681  
www.ClecoTools.com  
www.ClecoTools.de