

Cleco[®]
Production Tools

Parts Manual
SP12-1111-LG1
09/2019

NeoTek[™]
50EA Series
Corded Electric Assembly Tool



For additional product information visit our website at <http://www.ClecoTools.com>

Copyright © Apex Tool Group, 2019

No part of this document may be reproduced in any way or in any form, in whole or in part, or in a natural or machine-readable language, or transmitted on electronic, mechanical, optical, or other media, without the express permission of the Apex Tool Group.

Disclaimer

The Apex Tool Group reserves the right to modify, supplement, or improve this document or the product without prior notice.

Trademark

Cleco is a registered trademark of Apex Brands, Inc.

Apex Tool Group

670 Industrial Drive
Lexington, SC 29072

Manufacturer:

Apex Tool Group, LLC
670 Industrial Drive
Lexington, South Carolina 29072, USA

Importers:

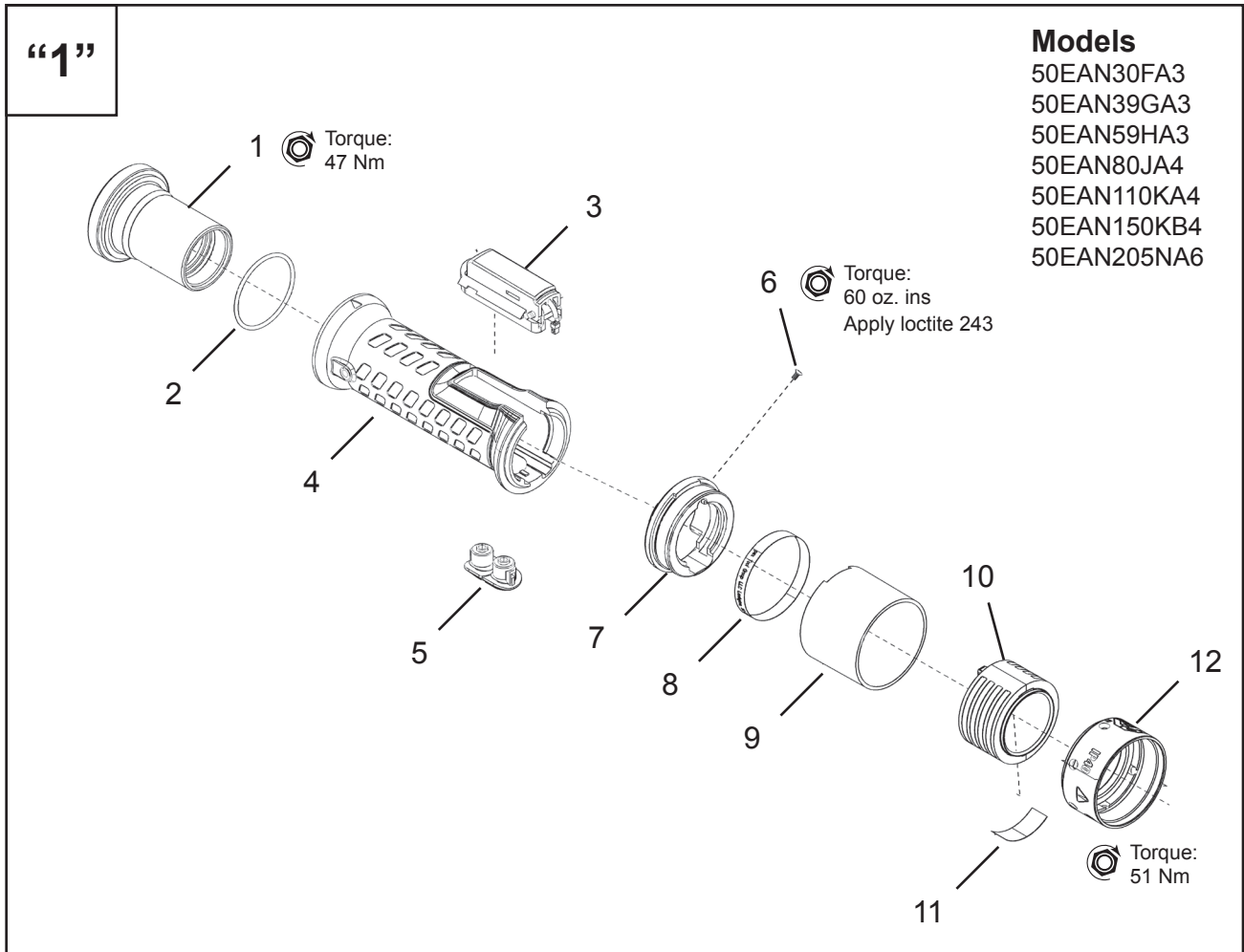
Apex Tool Group GmbH
Industriestraße 1
73463 Westhausen, Germany

Apex Tool Group SAS
25 Avenue Maurice Chevalier - ZI
77330 Ozoir-La-Ferrière
France

Further Document for Safety Instructions

No.	Document type
TM12-1109	Instruction Manual 30 & 50 & 70 Series NeoTek

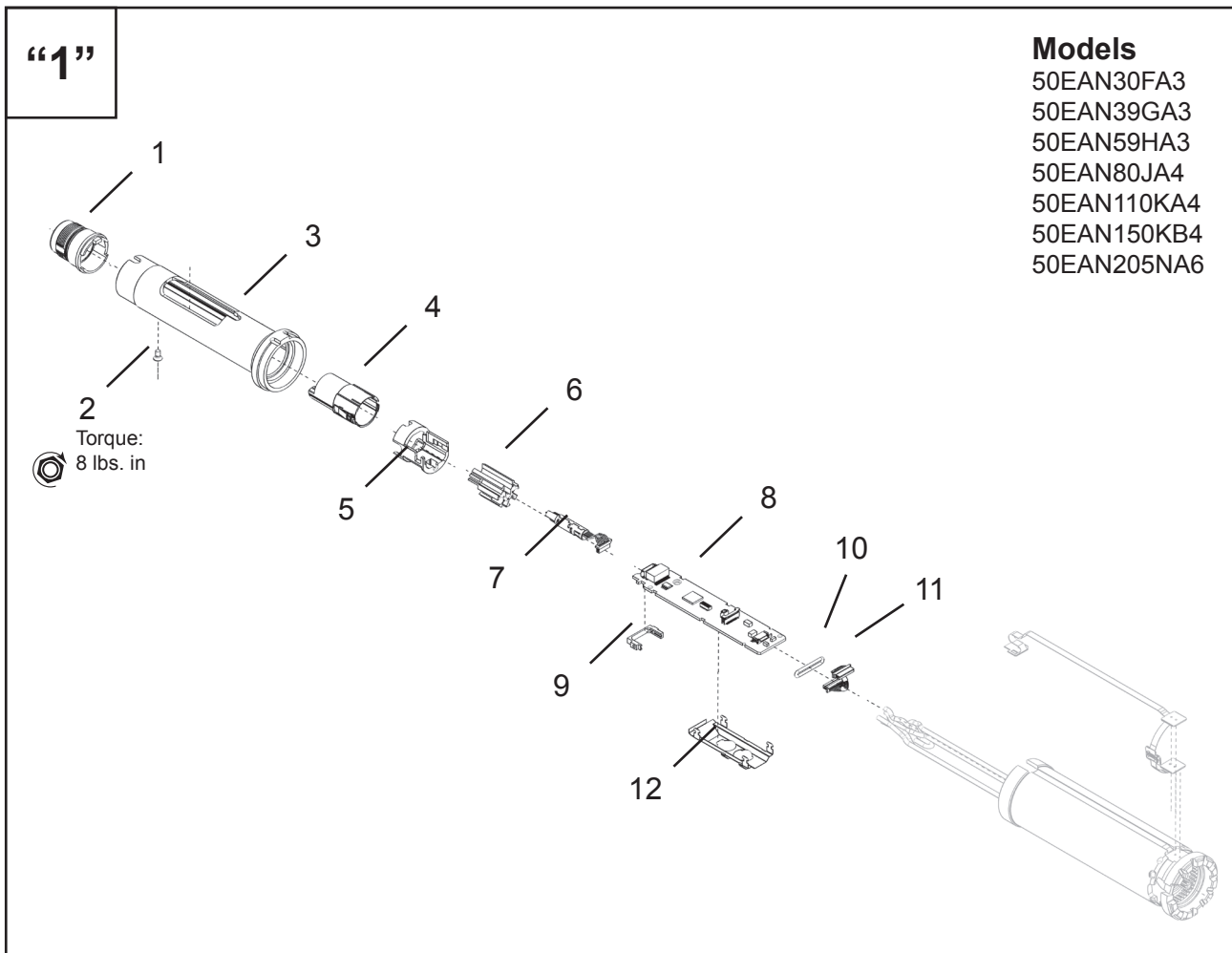
Handle Assembly



Ref	Number	#	EN
			Description
1	208746PT	1	Nut, Handle
2	22598	1	O-Ring
3	302086PT	1	Start Lever Assembly
4	208532PT	1	Grip, Handle
5	302085PT	1	Button Asm., Multi Function
6	207949PT	1	Screw, Flat Head Torx
7	207964PT	1	Ring, Label
8	207951PT	1	Label, Marking Ring
9	207925PT	1	Ring, Protective
10	207905PT	1	Light Ring Assembly
11	207967PT	1	Label, Serial No.
12	207904PT	1	Nut, Handle (36.2mm Motor)

= Quantity

Handle Assembly

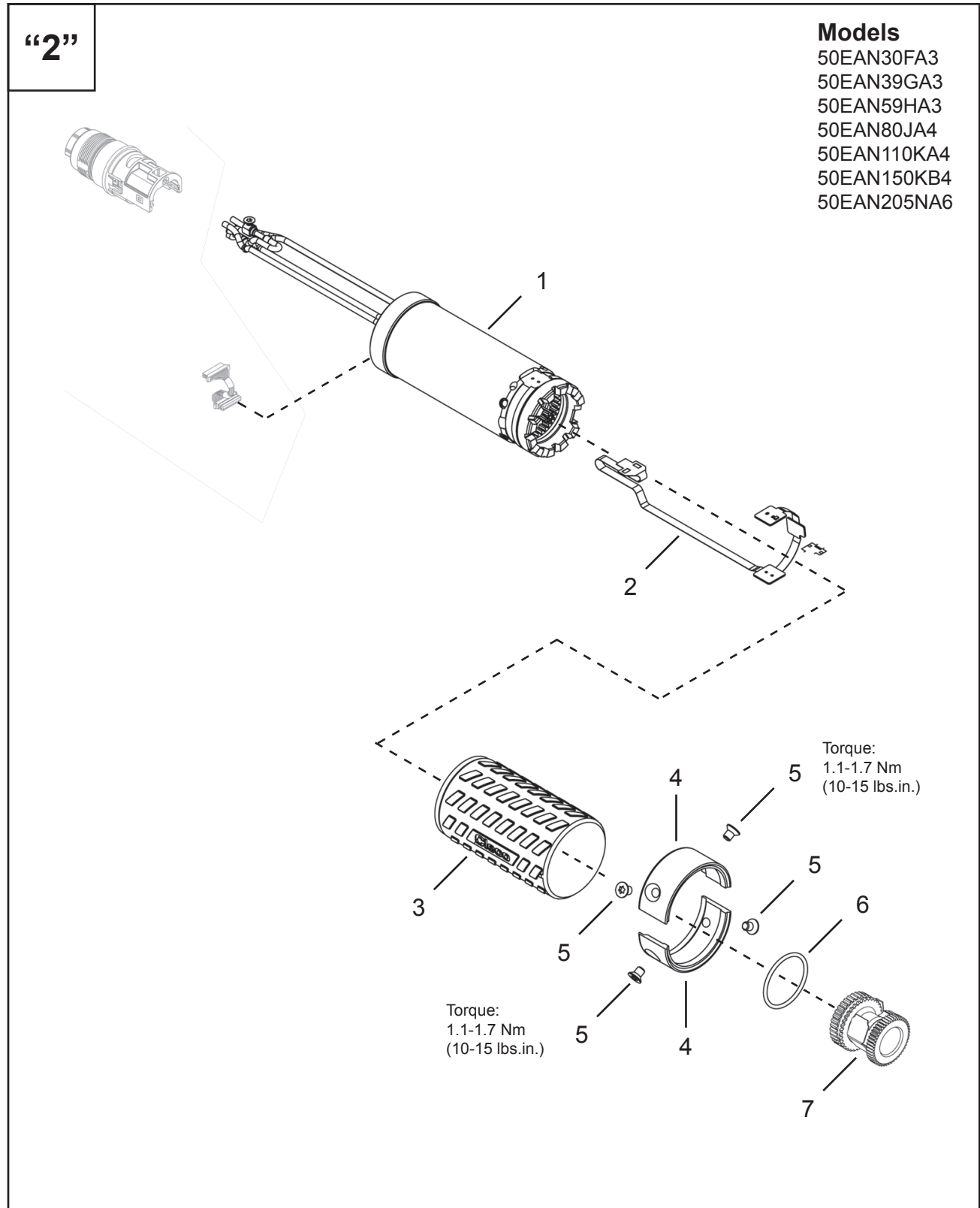


Ref	Number	#	EN
			Description
1	961559PT	1	Housing, Connector
2	207921PT	1	Screw, Flat Head Torx
3	207903PT	1	Housing, Handle
4	961558PT	1	Connector Body
5	961564PT	1	Support, TIM Board
6	961692PT	1	Contact Carrier
7	961557PT	1	Cable Asm., TIM to Connector
8	961668PT	1	TIM Board
9	961575PT	1	Grommet, Rubber
10	863454	1	O-Ring
11	961594PT	1	Cable Asm., Encoder
12	T50-1000391	1	Wire, Guide

= Quantity

This page has been left empty deliberately.

Motor Assembly



Ref	Number	#	EN
			Description
1	Table "2"	1	Motor with Encoder
2	961556PT	1	Flex Cable Assembly
3	208047PT	1	Motor Housing Cover
4	Table "2"	2	Accessory Cover
5	208871PT	4	Flat Head Torx Drive Screw (M4 x 0.7 x 6mm)
6	84711	1	O-Ring
7	Table "2"	1	Transducer Assembly

= Quantity

Table "2"

Ref	Description	#	50EAN30FA3	#	50EAN39GA3	#	50EAN59HA3	#	50EAN80JA4
1	Motor with Encoder	1	961593PT	1	961592PT	1	961592PT	1	961592PT
4	Accessory Cover	2	208869PT	2	208870PT	2	208870PT	2	208870PT
7	Transducer Assembly	1	961603PT-026	1	961604PT-027	1	961604PT-041	1	961604PT-049

Ref	Description	#	50EAN110KA4	#	50EAN150KB4	#	50EAN205NA6
1	Motor with Encoder	1	961592PT	1	961592PT	1	961592PT
4	Accessory Cover	2	208870PT	2	208870PT	2	208870PT
7	Transducer Assembly	1	961605PT-082	1	961606PT-122	1	961606PT-122

302146PT Double Stage Gearing

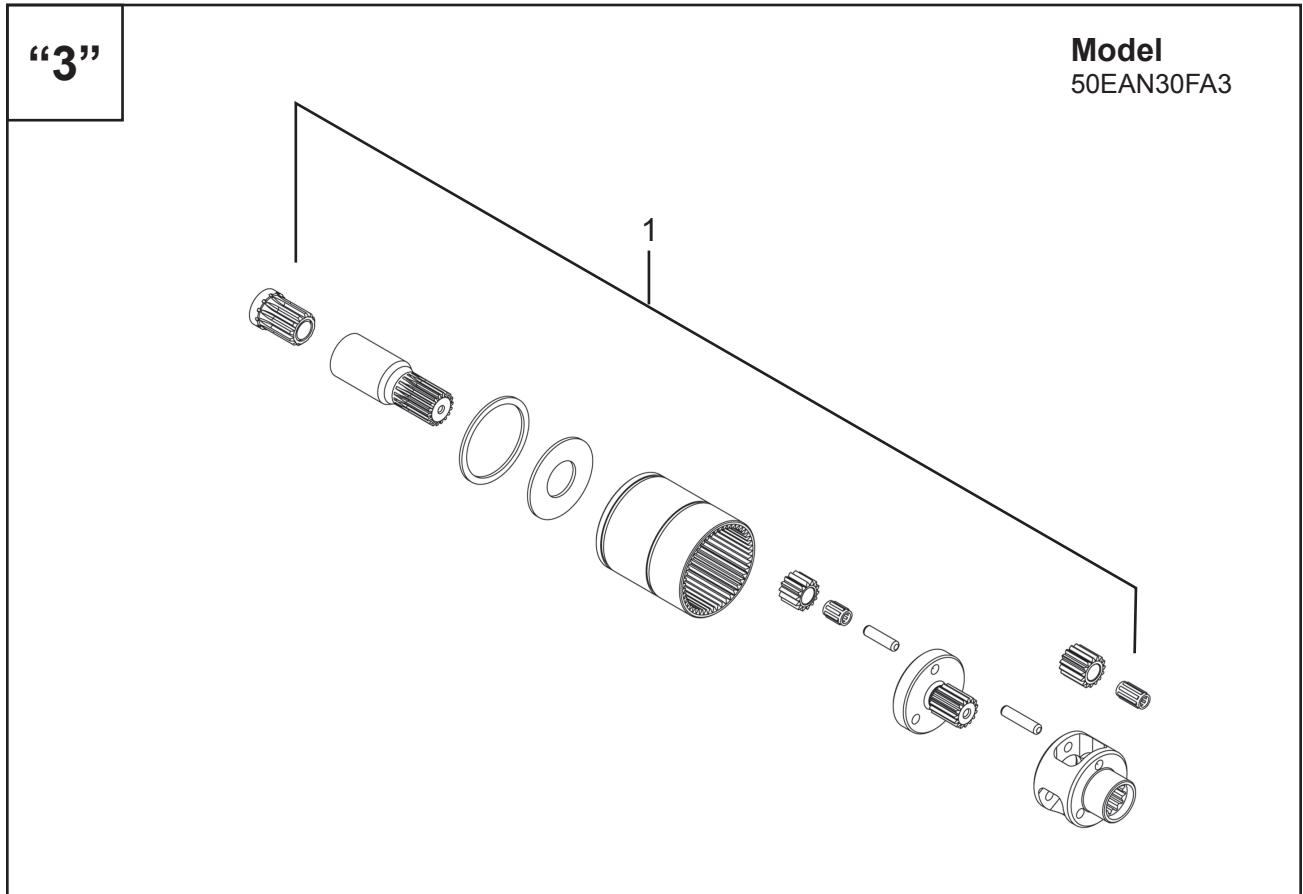


Illustration "3": 302146PT Double Stage Gearing

Ref	Number	#	EN
			Description
1	302146PT	1	Double Stage Gearing Assembly

302162PT Double Stage Gearing

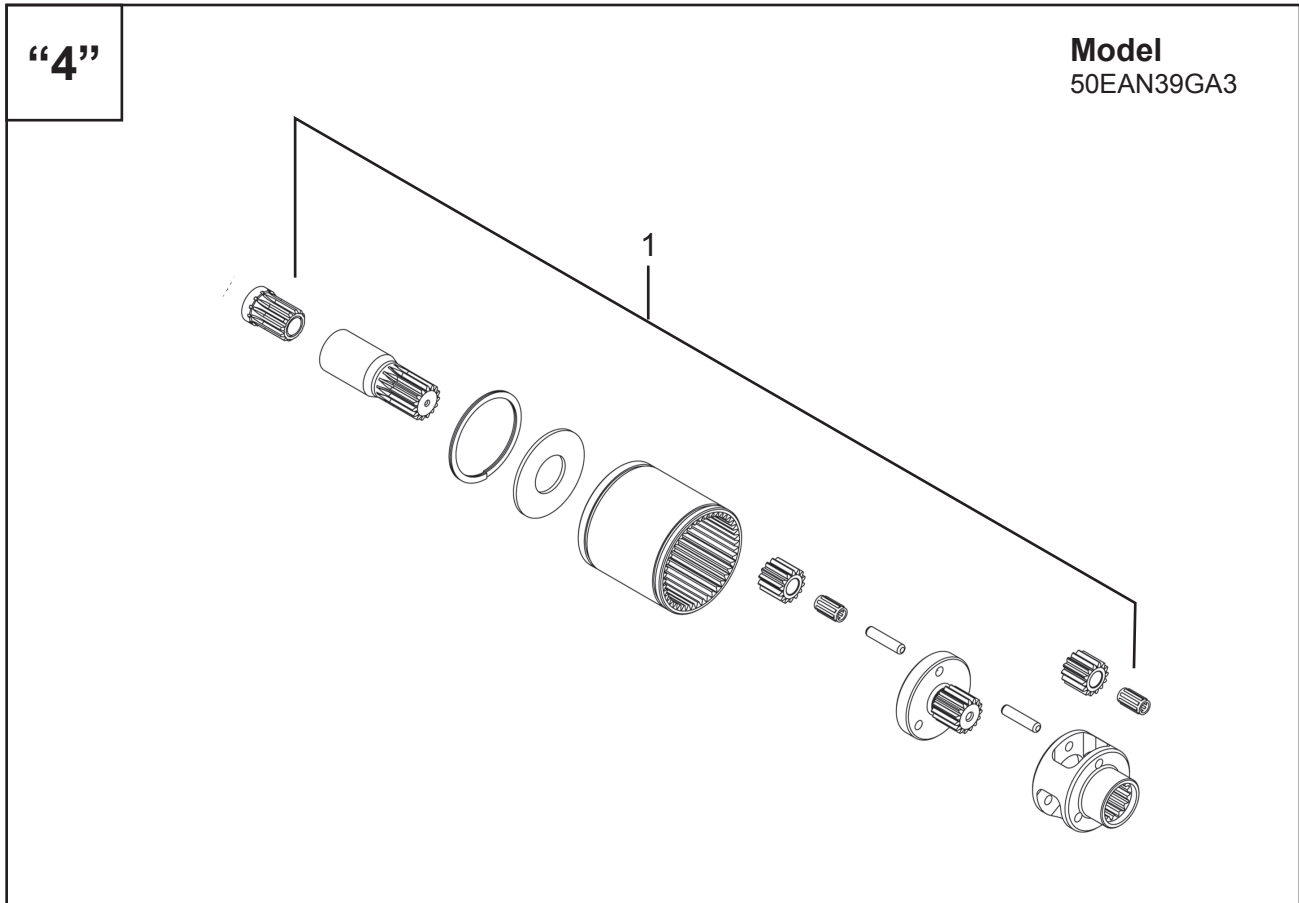


Illustration "4": 302162PT Double Stage Gearing

Ref	Number	#	EN
			Description
1	302162PT	1	Double Stage Gearing Assembly

302123PT Double Stage Gearing

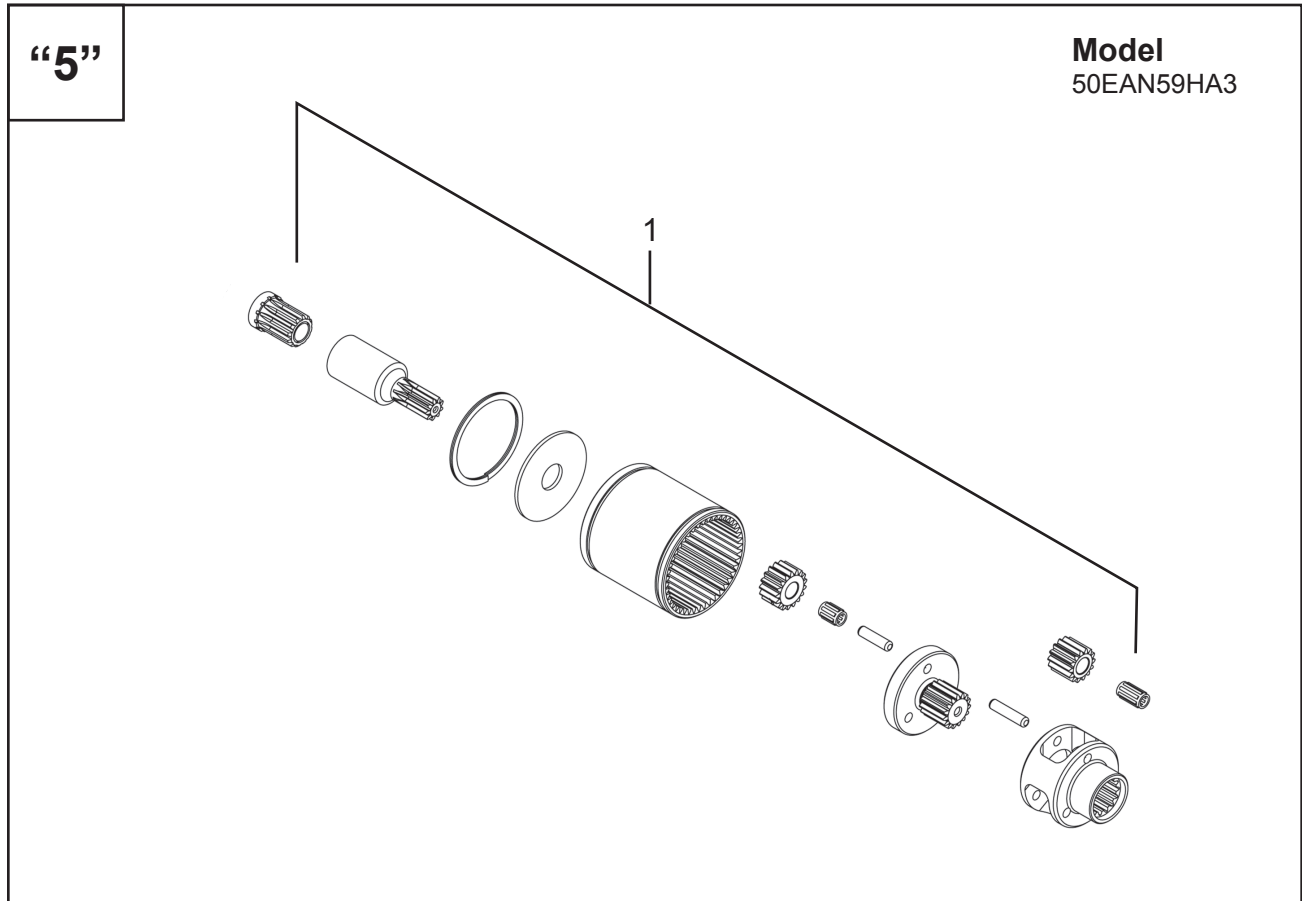


Illustration "5": 302123PT Double Stage Gearing

Ref	Number	#	EN
			Description
1	302123PT	1	Double Stage Gearing Assembly

302148PT Double Stage Gearing

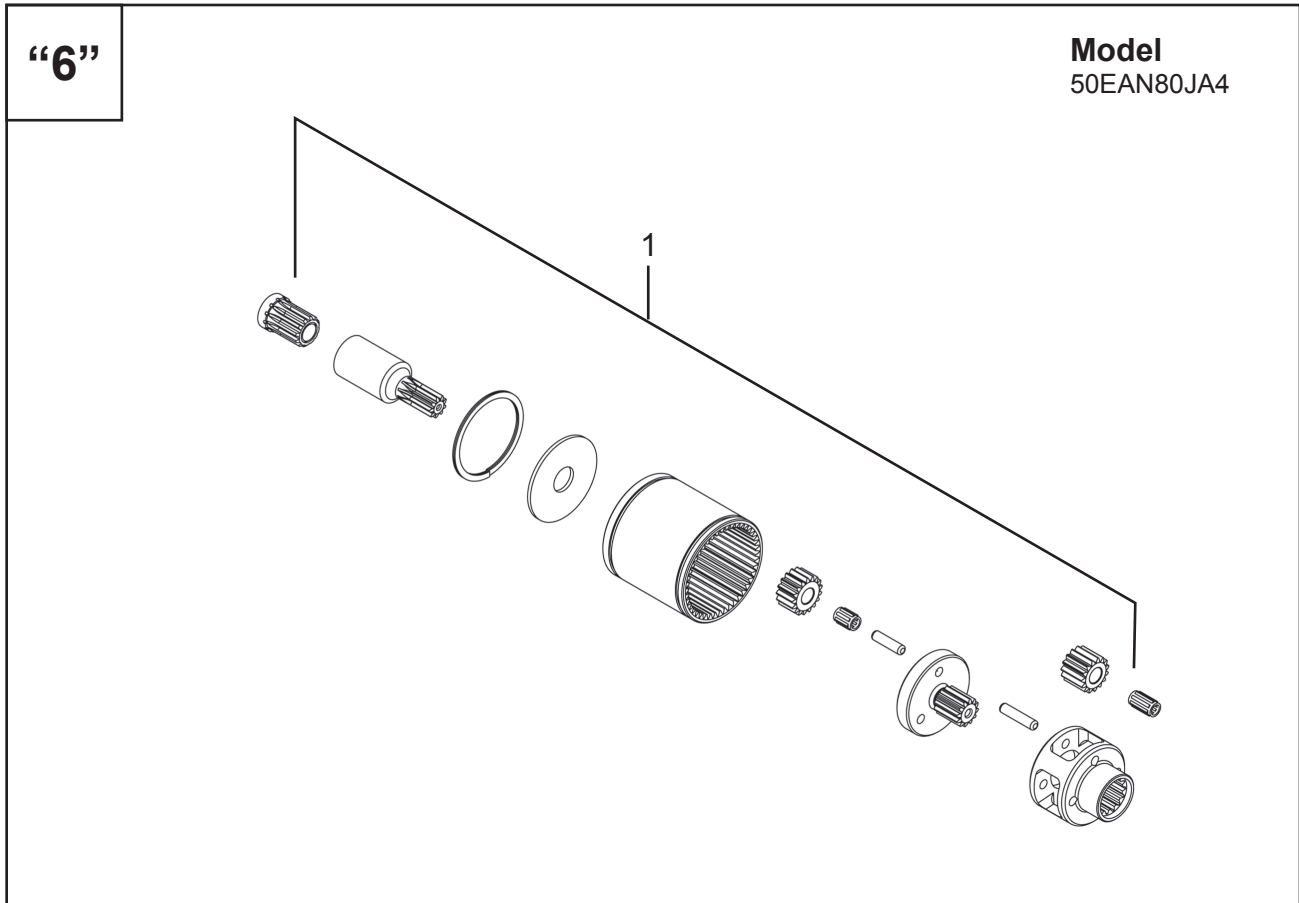


Illustration "6": 302148PT Double Stage Gearing

Ref	Number	#	EN
			Description
1	302148PT	1	Double Stage Gearing Assembly

302149PT Triple Stage Gearing

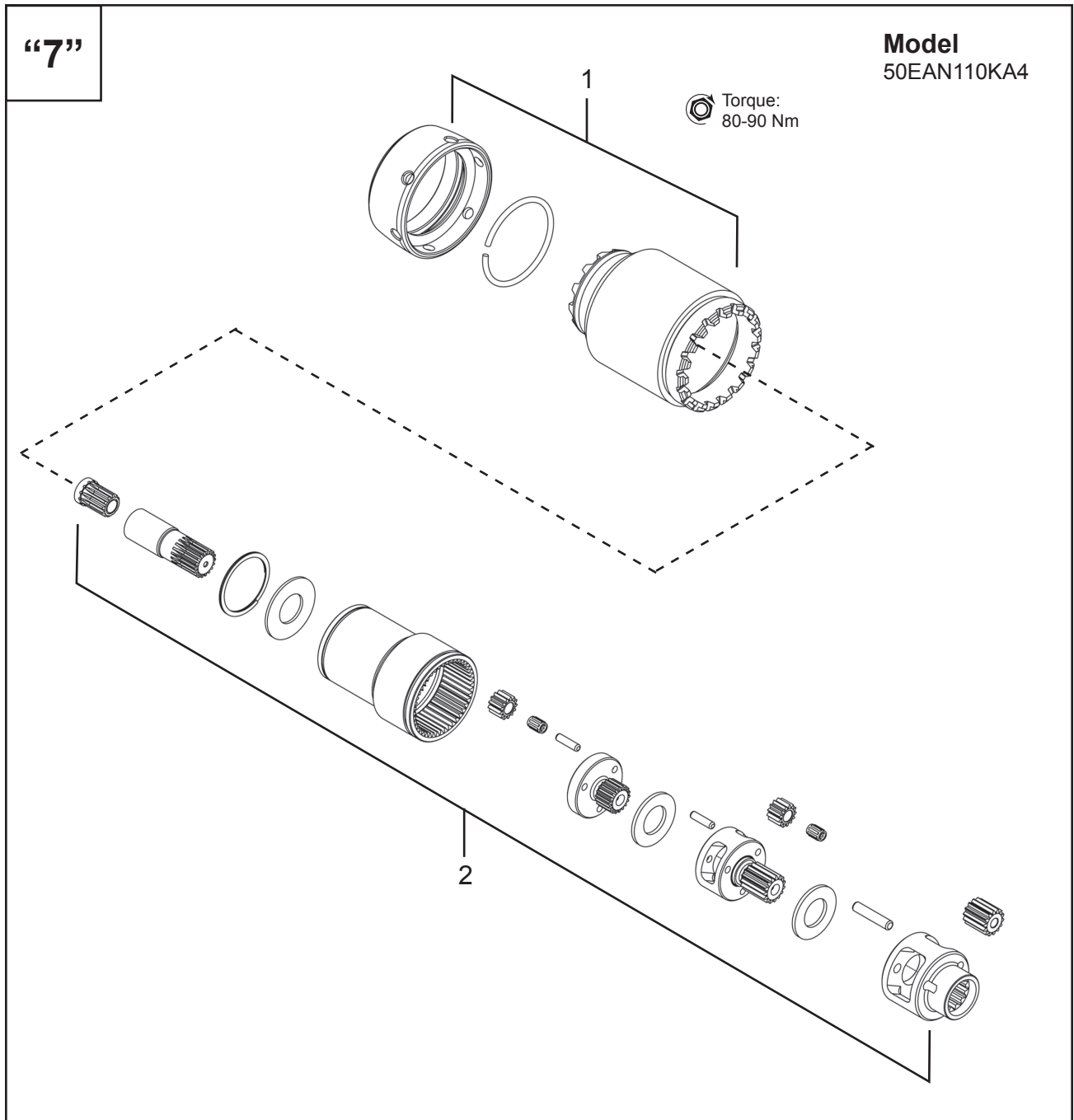


Illustration “7”: 302149PT Triple Stage Gearing

Ref	Number	#	EN
			Description
1	302149PT	1	Triple Stage Gearing Assembly
2	T50-3000090	1	Gear Case Housing Assembly

302120PT Triple Stage Gearing

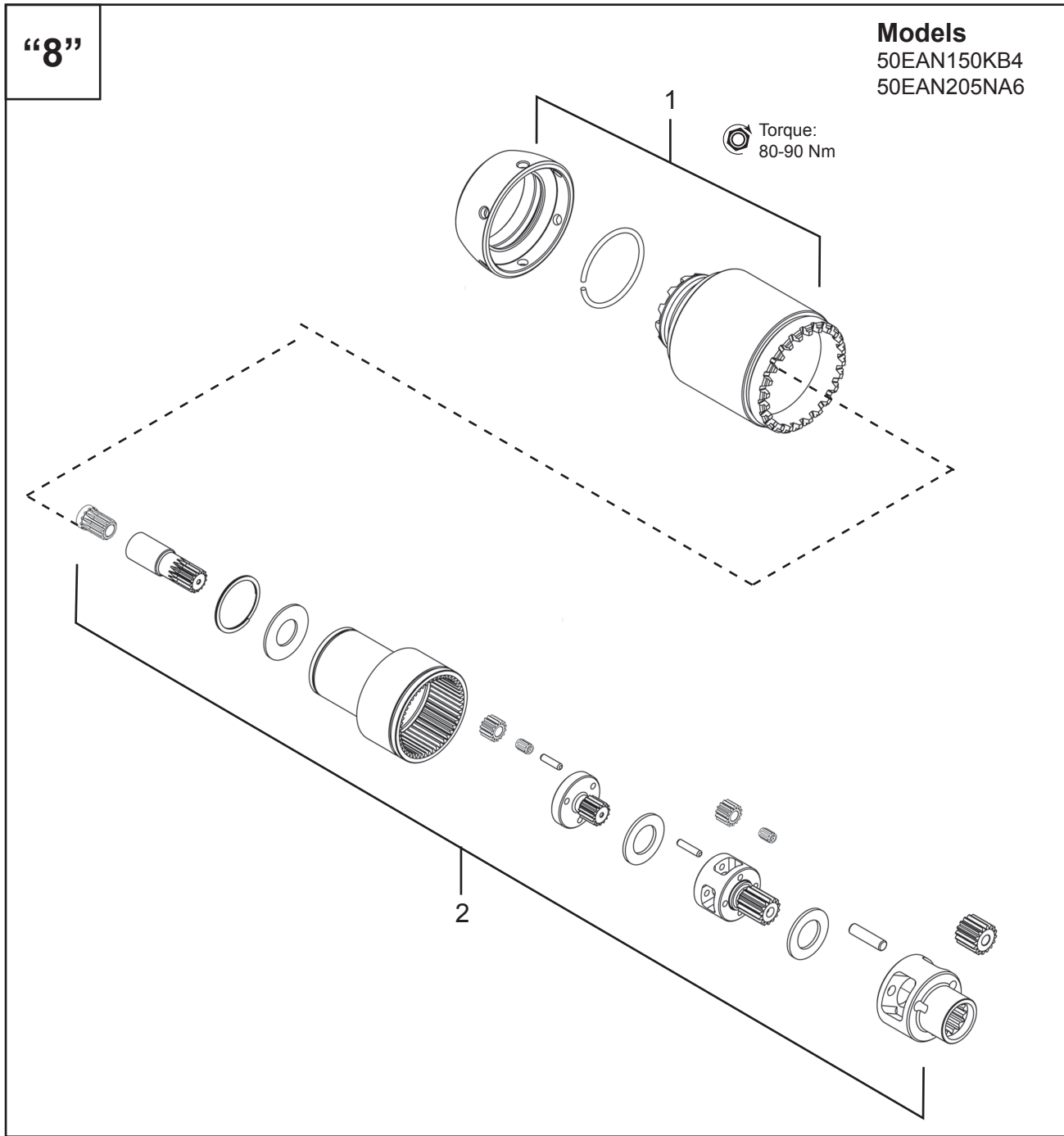


Illustration "8": 302120PT Triple Stage Gearing

Ref	Number	#	EN
			Description
1	302120PT	1	Triple Stage Gearing Assembly
2	T50-3000091	1	Motor Housing Nut

302172PT Angle Head Attachment (FA3)

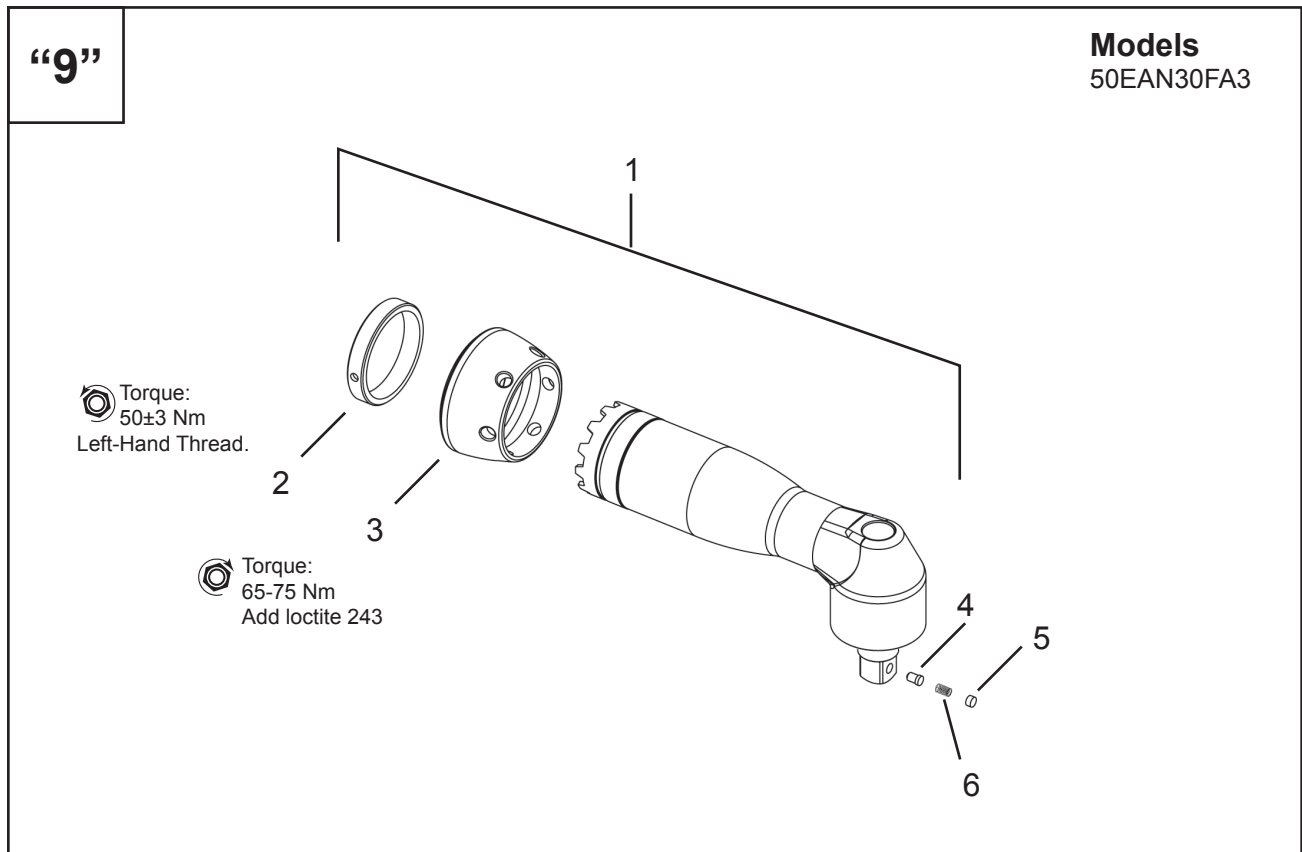


Illustration “9”: 302172PT Angle Head Attachment (FA3)

Ref	Number	#	EN
			Description
1	302172PT	1	Angle Head Attachment Assembly (includes Ref. 2-6)
2	208127PT	1	Retainer Nut
3	208128PT	1	Lock Nut
4	24499	1	Retainer Button
5	9D6481	1	Compression Spring
6	26989PT	1	Retainer Plug

= Quantity

302190PT Angle Head Attachment (GA3)

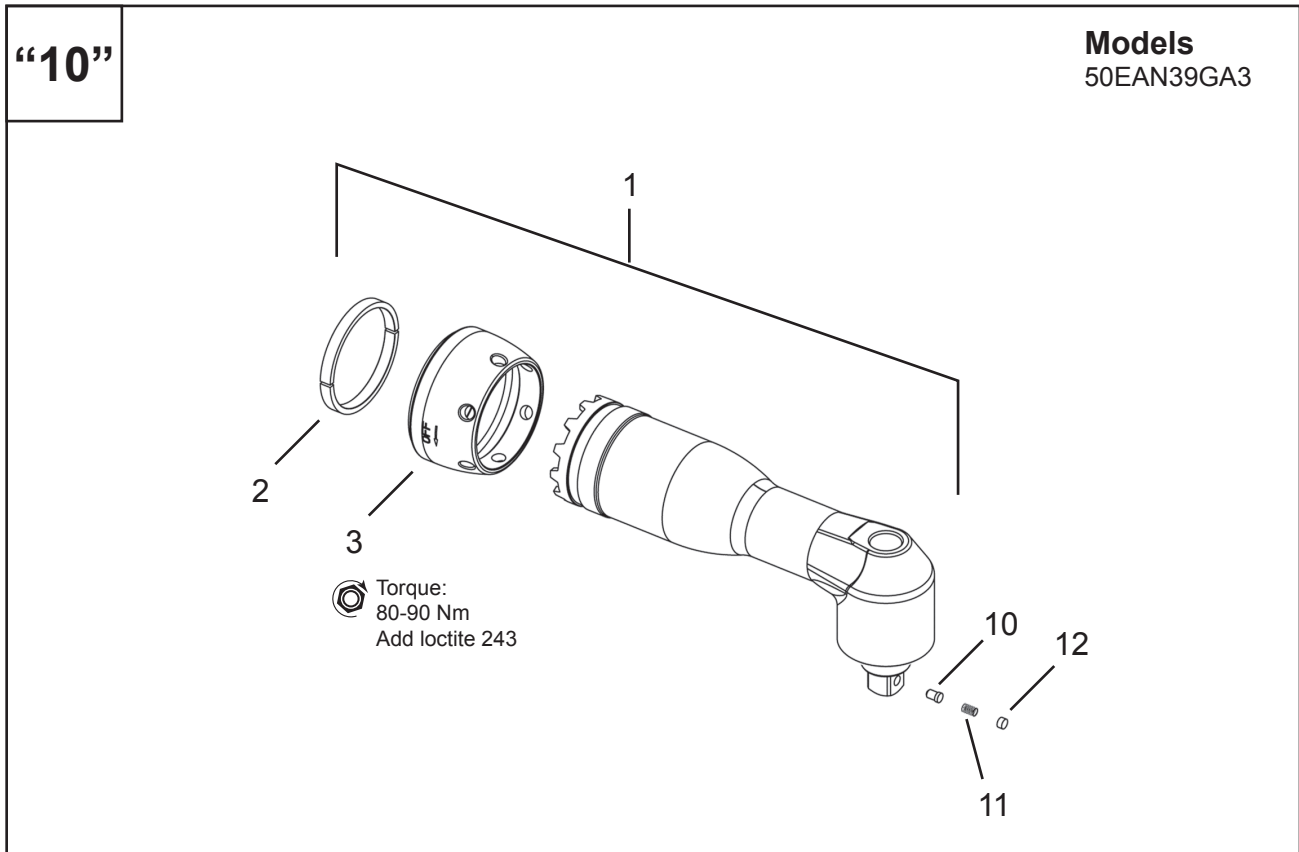


Illustration “10”: 302190PT Angle Head Attachment (GA3)

Ref	Number	#	EN
			Description
1	302190PT	1	Angle Head Attachment Assembly (includes Ref. 2-6)
2	208224PT	1	Split Ring
3	208225PT	1	Lock Nut
4	24499	1	Retainer Button
5	9D6481	1	Compression Spring
6	26989PT	1	Retainer Plug

= Quantity

302173PT Angle Head Attachment (HA3)

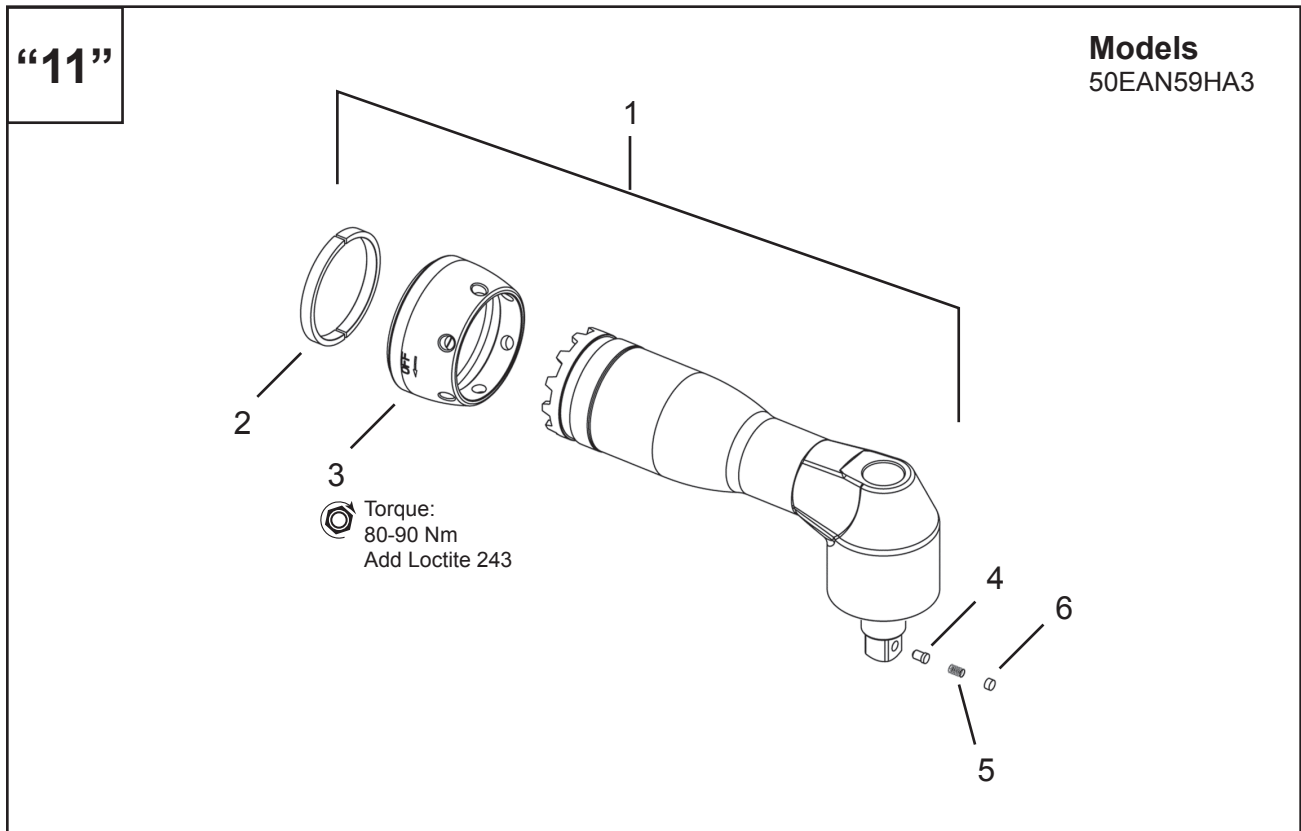


Illustration “11”: 302173PT Angle Head Attachment (HA3)

Ref	Number	#	EN
			Description
1	302173PT	1	Angle Head Attachment Assembly (includes Ref. 2-6)
2	208224PT	1	Split Ring
3	208225PT	1	Lock Nut
4	24499	1	Retainer Button
5	9D6481	1	Compression Spring
6	26989PT	1	Retainer Plug

= Quantity

302175PT Angle Head Attachment (JA4)

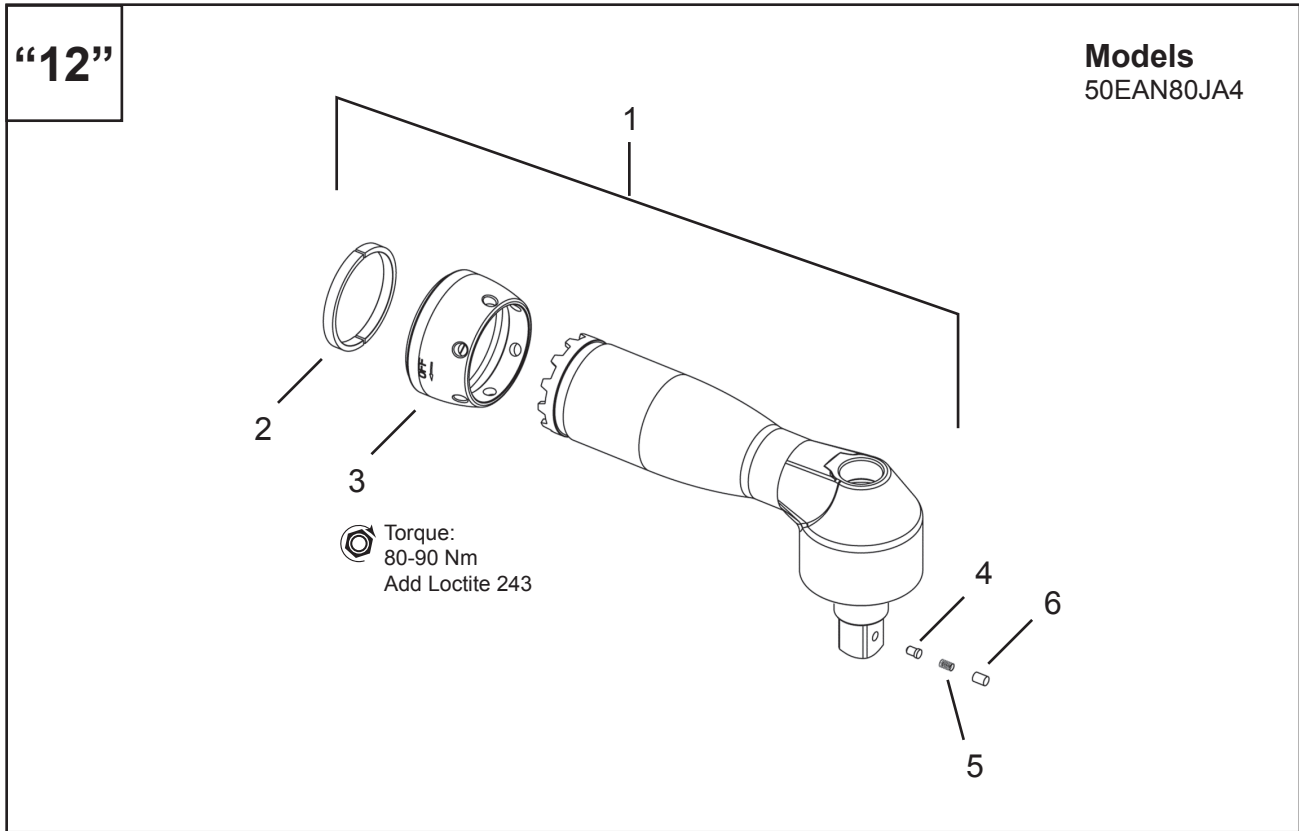


Illustration “12”: 302175PT Angle Head Attachment (JA4)

Ref	Number	#	EN
			Description
1	302175PT	1	Angle Head Attachment Assembly (includes Ref. 2-6)
2	208224PT	1	Split Ring
3	208225PT	1	Lock Nut
4	24499	1	Retainer Button
5	9D6481	1	Compression Spring
6	207764PT	1	Retainer Plug

= Quantity

302127PT Angle Head Attachment (KA4)

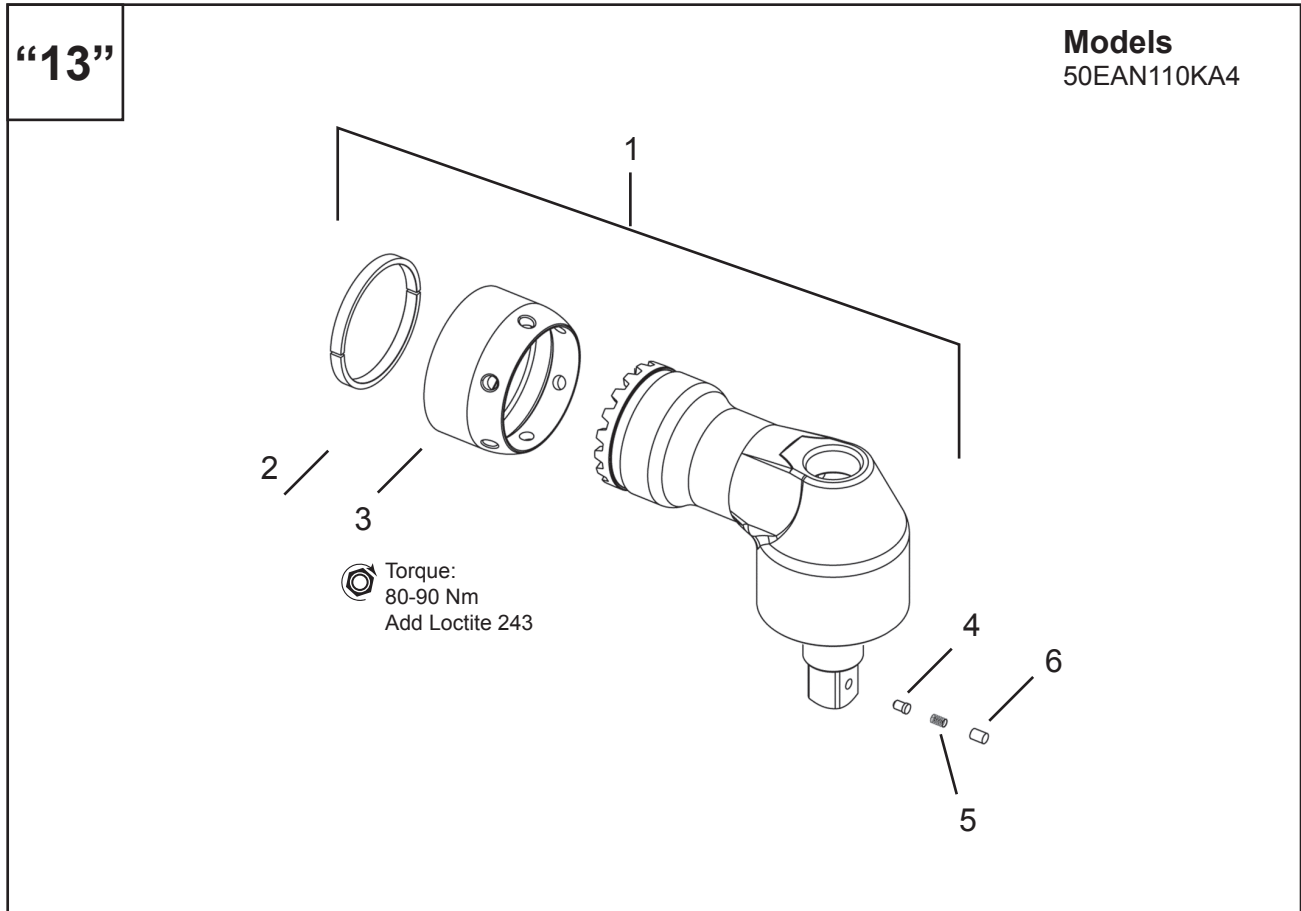


Illustration "13": 302127PT Angle Head Attachment (KA4)

Ref	Number	#	EN
			Description
1	302127PT	1	Angle Head Attachment Assembly (includes Ref. 2-6)
2	208458PT	1	Split Ring
3	208183PT	1	Lock Nut
4	24499	1	Retainer Button
5	9D6481	1	Compression Spring
6	207764PT	1	Retainer Plug

= Quantity

302176PT Angle Head Attachment (KB4)

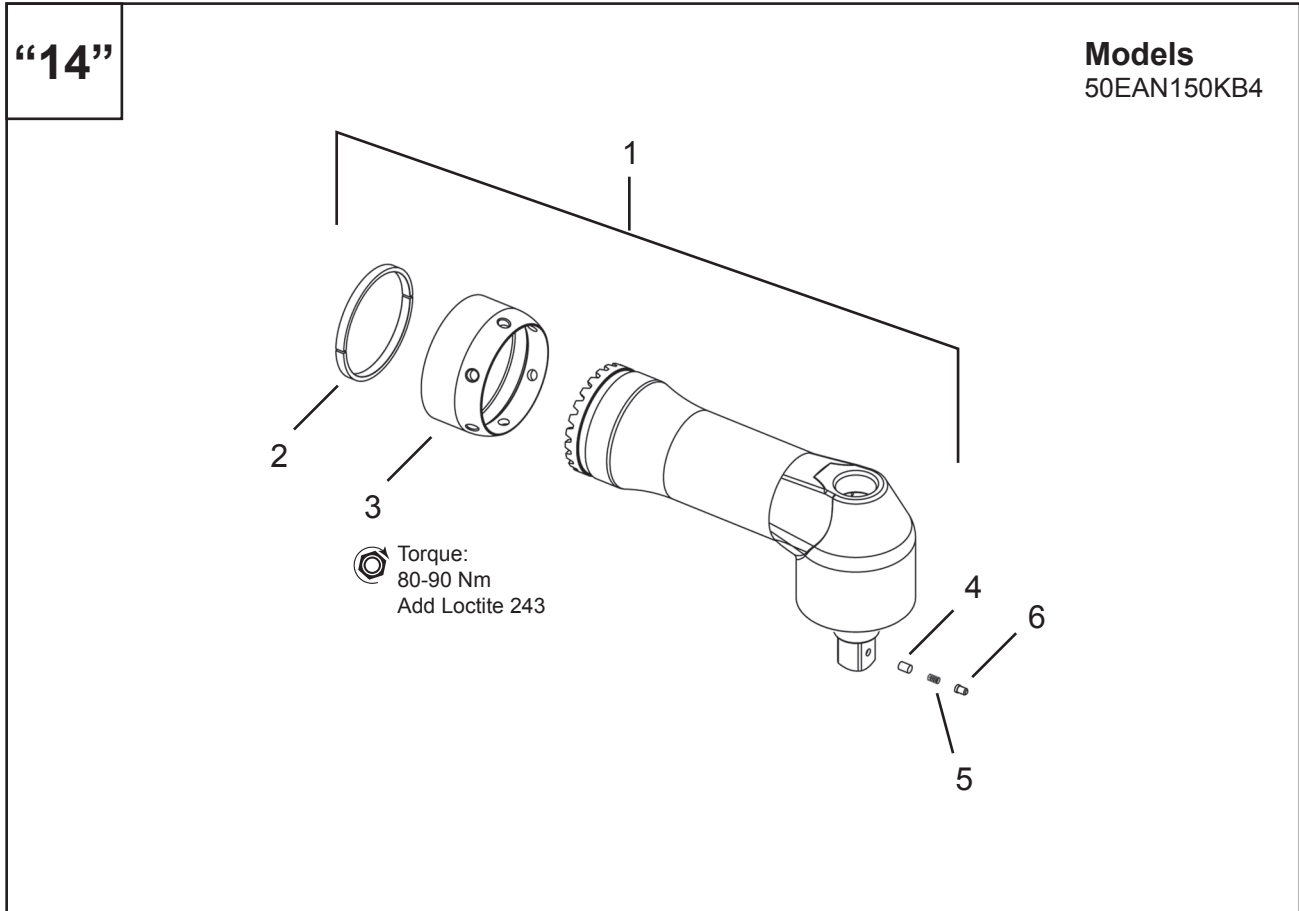


Illustration “14”: 302176PT Angle Head Attachment (KB4)

Ref	Number	#	EN
			Description
1	302176PT	1	Angle Head Attachment Assembly (includes Ref. 2-6)
2	208198PT	1	Split Ring
3	208197PT	1	Lock Nut
4	24499	1	Retainer Button
5	9D6481	1	Compression Spring
6	207764PT	1	Retainer Plug

= Quantity

302174PT Angle Head Attachment (NA6)

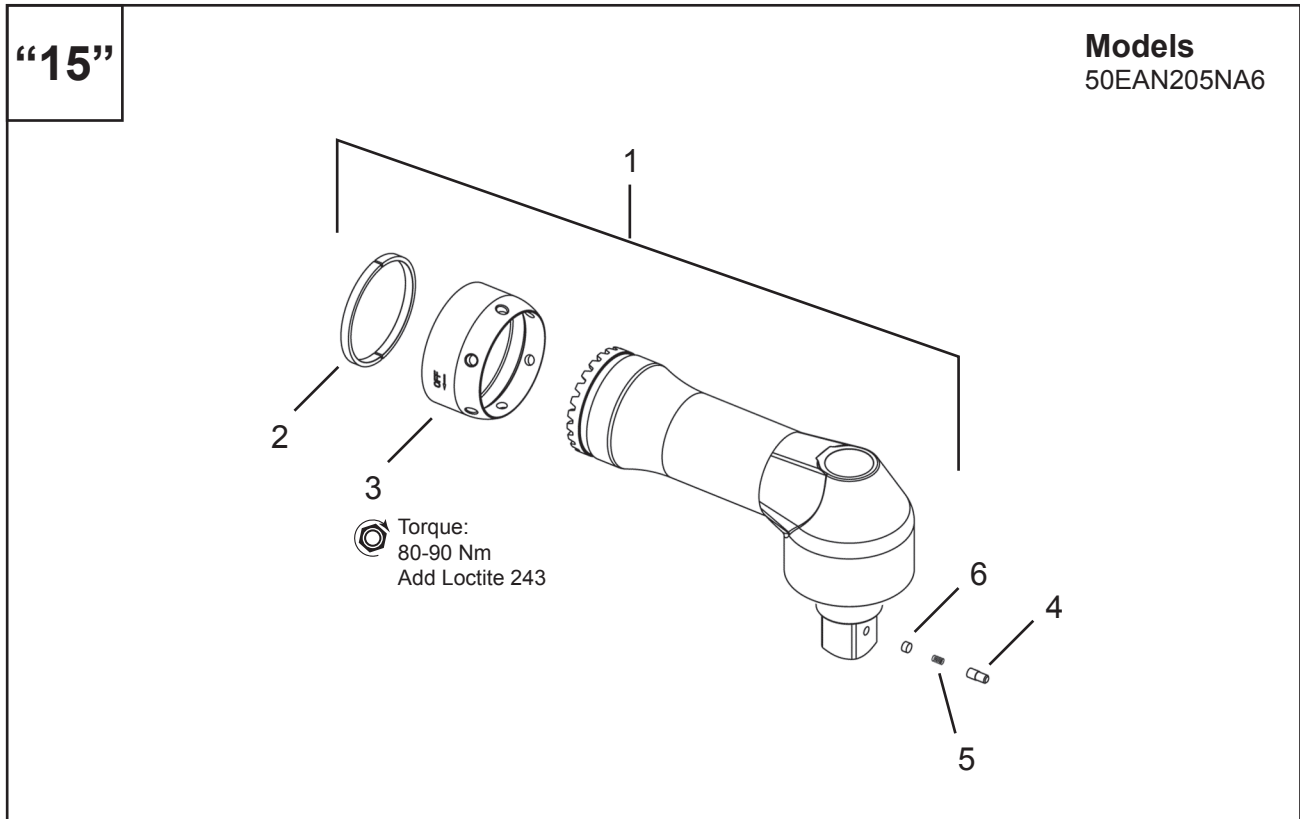


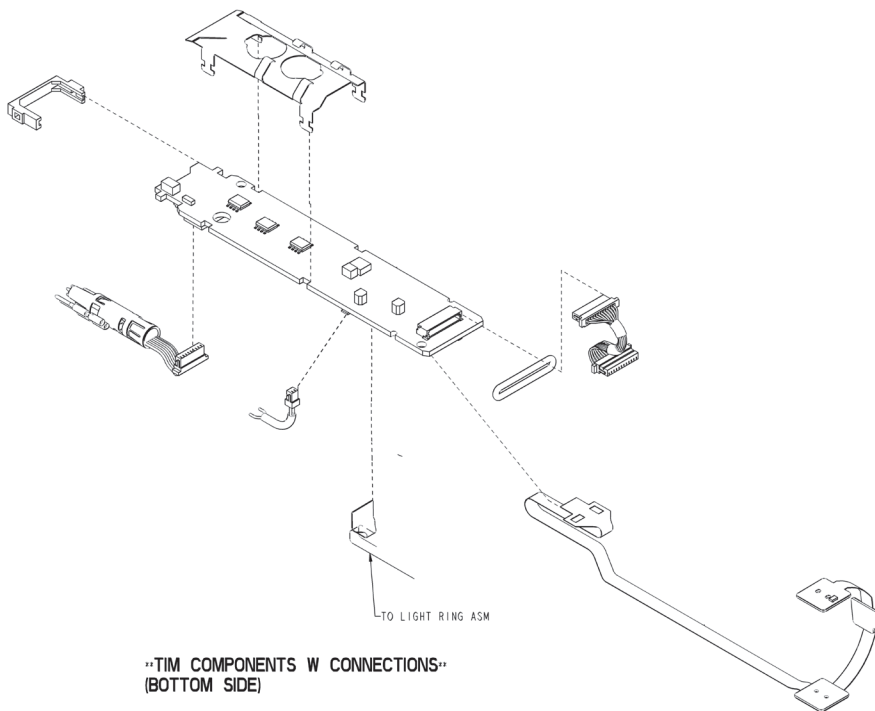
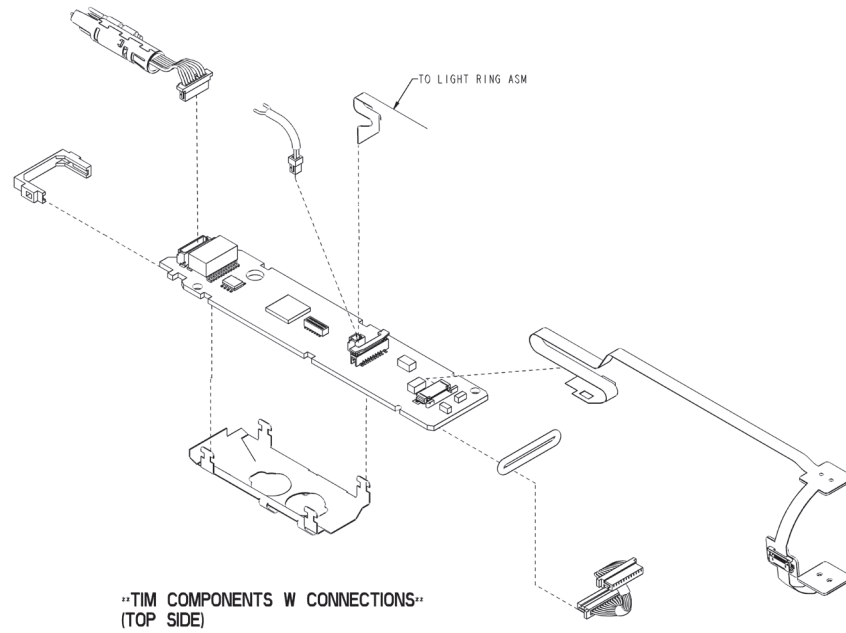
Illustration “15”: 302174PT Angle Head Attachment (NA6)

Ref	Number	#	EN
			Description
1	302174PT	1	Angle Head Attachment Assembly (includes Ref. 2-6)
2	208198PT	1	Split Ring
3	208197PT	1	Lock Nut
4	23355	1	Retainer Button
5	9D6481	1	Compression Spring
6	27020PT	1	Retainer Plug

= Quantity

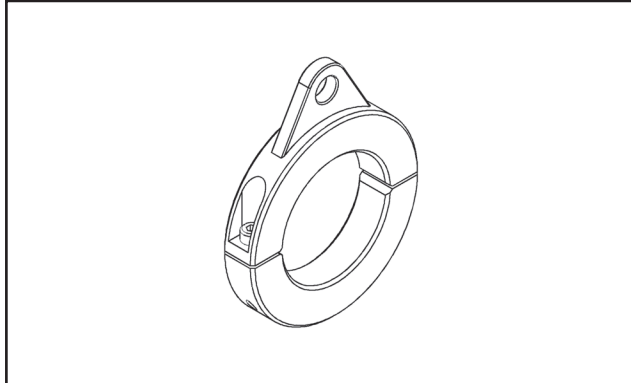
TIM Service

“16”

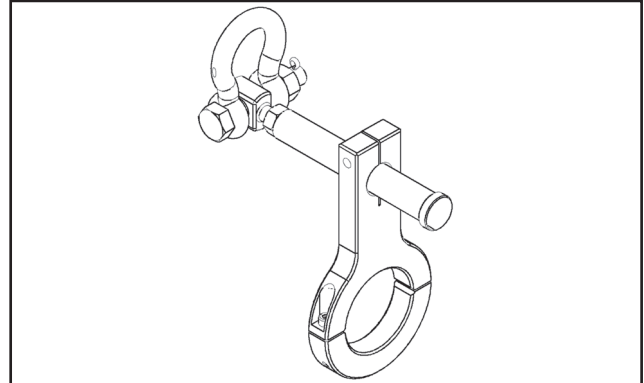


Accessories

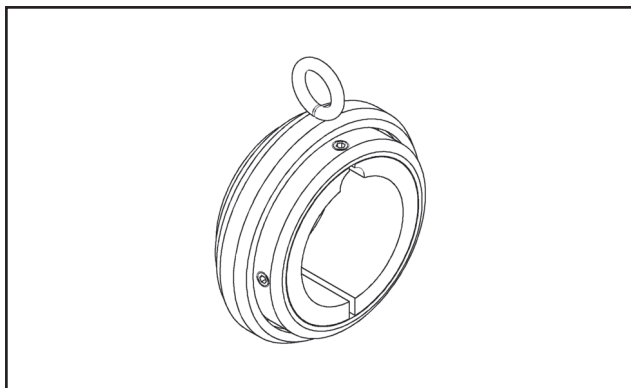
Suspension Bails



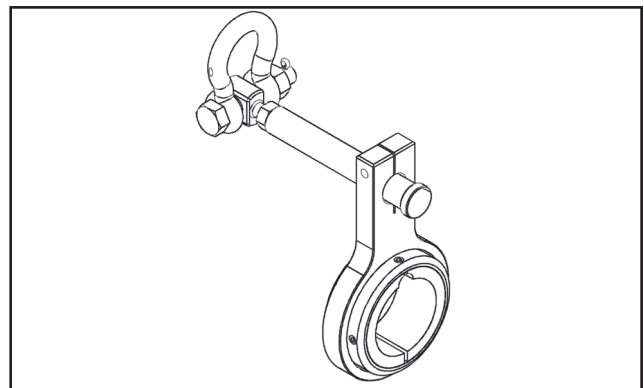
Part Number	Description
T50-3000048	Suspension Bail - Fixed



Part Number	Description
T50-3000060	Suspension Bail - Fixed Offset



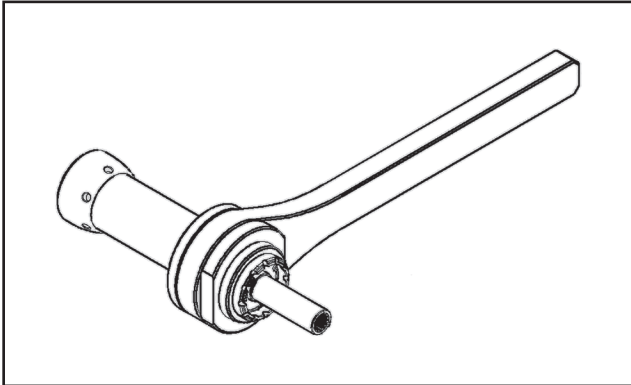
Part Number	Description
T50-3000063	Suspension Bail - Swivel



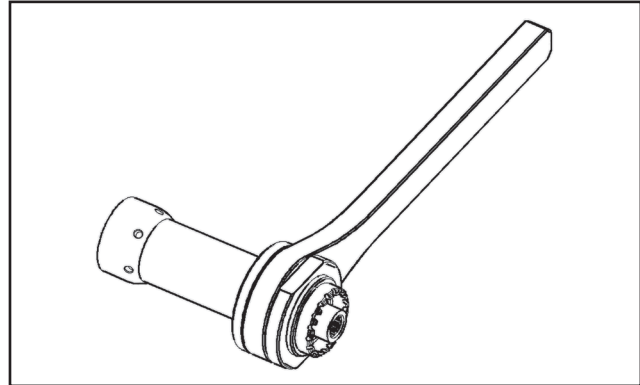
Part Number	Description
T50-3000061	Suspension Bail - Swivel Offset

Accessories (continued)

Body Extension Kits

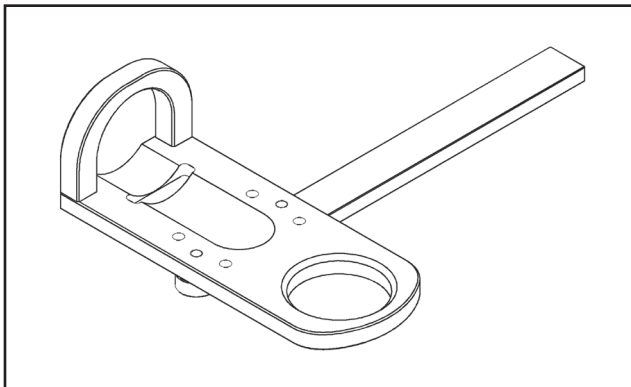


Part Number	Description	Maximum Torque
T50-3000072	Body Extension Kit	59 Nm
T50-3000071	Body Extension Kit	80 Nm



Part Number	Description	Maximum Torque
T50-3000069	Body Extension Kit	110 Nm
T50-3000070	Body Extension Kit	150 Nm
T50-3000070	Body Extension Kit	205 Nm

Reaction Bars



Part Number	Description	Maximum Torque
T50-3000064	Reaction Bar	59 Nm
T50-3000065	Reaction Bar	80 Nm
T50-3000066	Reaction Bar	110 Nm
T50-3000067	Reaction Bar	150 Nm
T50-3000068	Reaction Bar	205 Nm

POWER TOOLS SALES & SERVICE CENTERS

Please note that all locations may not service all products.

Contact the nearest Cleco® Sales & Service Center for the appropriate facility to handle your service requirements.

 Sales Center

 Service Center

NORTH AMERICA | SOUTH AMERICA

Detroit, Michigan

Apex Tool Group
2630 Superior Court
Auburn Hills, MI 48236
Phone: +1 (248) 393-5644
Fax: +1 (248) 391-6295

Lexington, South Carolina

Apex Tool Group
670 Industrial Drive
Lexington, SC 29072
Phone: +1 (800) 845-5629
Phone: +1 (919) 387-0099
Fax: +1 (803) 358-7681

Mexico

Apex Tool Group
Vialidad El Pueblito #103
Parque Industrial Querétaro
Querétaro, QRO 76220
Mexico
Phone: +52 (442) 211 3800
Fax: +52 (800) 685 5560

Brazil

Apex Tool Group
Av. Liberdade, 4055
Zona Industrial Iporanga
Sorocaba, São Paulo
CEP# 18087-170
Brazil
Phone: +55 15 3238 3870
Fax: +55 15 3238 3938

EUROPE | MIDDLE EAST | AFRICA

England

Apex Tool Group GmbH
C/O Spline Gauges
Piccadilly, Tamworth
Staffordshire B78 2ER
United Kingdom
Phone: +44 1827 8727 71
Fax: +44 1827 8741 28

France

Apex Tool Group SAS
25 Avenue Maurice Chevalier - ZI
77330 Ozoir-la-Ferrière
France
Phone: +33 1 64 43 22 00
Fax: +33 1 64 43 17 17

Germany

Apex Tool Group GmbH
Industriestraße 1
73463 Westhausen
Germany
Phone: +49 (0) 73 63 81 0
Fax: +49 (0) 73 63 81 222

Hungary

Apex Tool Group
Hungária Kft.
Platánfa u. 2
9027 Győr
Hungary
Phone: +36 96 66 1383
Fax: +36 96 66 1135

ASIA PACIFIC

Australia

Apex Tool Group
519 Nurigong Street, Albury
NSW 2640
Australia
Phone: +61 2 6058 0300

China

Apex Power Tool Trading
(Shanghai) Co., Ltd.
2nd Floor, Area C
177 Bi Bo Road
Pu Dong New Area, Shanghai
China 201203 P.R.C.
Phone: +86 21 60880320
Fax: +86 21 60880298

India

Apex Power Tool India
Private Limited
Gala No. 1, Plot No. 5
S. No. 234, 235 & 245
Indialand Global
Industrial Park
Taluka-Mulsi, Phase I
Hinjawadi, Pune 411057
Maharashtra, India
Phone: +91 020 66761111

Japan

Apex Tool Group Japan
Korin-Kaikan 5F,
3-6-23 Shibakoen, Minato-Ku,
Tokyo 105-0011, JAPAN
Phone: +81-3-6450-1840
Fax: +81-3-6450-1841

Korea

Apex Tool Group Korea
#1503, Hibrand Living Bldg.,
215 Yangjae-dong,
Seocho-gu, Seoul 137-924,
Korea
Phone: +82-2-2155-0250
Fax: +82-2-2155-0252

Cleco®
Production Tools



SP12-1110-LG1

Apex Tool Group, LLC

Phone: +1 (800) 845-5629

Phone: +1 (919) 387-0099

Fax: +1 (803) 358-7681

www.ClecoTools.com

www.ClecoTools.de